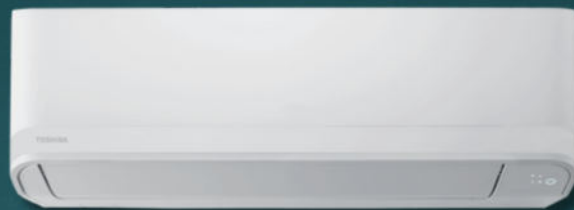


TOSHIBA



SEIYA

Experience the
sound of silence



SEIYA

SILENCE IS GOLDEN

SEIYA is a cost-effective quiet solution that uses the new Toshiba Inverter and compressor technology with R32 to offer a powerful and efficient heating and cooling performance and year-round comfort.



Everyday the sound

Comfort of silence

SEIYA has been designed with maximum comfort in mind. It offers exclusive features and high performance making everyday comfort a reality for all.

Toshiba is constantly innovating towards air conditioning excellence in line with users expectations. To reduce noise and improve comfort, SEIYA's Noise function reduces the sound level of the outdoor unit significantly, while its Quiet function reduces noise from the indoor giving you a good nights sleep.

Give yourself

a superior treatment

SEIYA's performance/price ratio makes it an exceptional product in the market.

The entire range boasts AEER cooling and ACOP heating performance, which means optimal comfort with low energy consumption.



TREAT YOURSELF TO JAPANESE QUALITY

Design

and reliability

Innovation, efficiency, high reliability, energy savings, respect for the environment. These powerful values are at the heart of everything we do at Toshiba.

For over 50 years, Toshiba has been providing its clients with the guaranteed precision and expertise of flawless Japanese quality.

Toshiba's innovative inverter

technology

Toshiba's innovative rotary compressor technology combines exemplary performance with outstanding reliability. Minimising fluctuations to ensure a constant temperature, it increases efficiency while significantly reducing the risk of incidental noise. Toshiba's Inverter Technology allows the SEIYA to regulate heating and cooling capacity at all times, by adjusting the compressor speed.



**COMFORT
UNLIMITED**

TOSHIBA

➤ Silence ANYWHERE



Unique noise reduction function
SEIYA: A Unique Air Conditioning System with Silent Operation Mode

Are you looking for a quiet air conditioning unit that won't disturb your neighbors? Look no further than SEIYA's Silent Operation Mode. With the touch of a button on the remote control, this feature reduces the outdoor unit's sound pressure level, prioritizing minimal outdoor sound over fast cooling or heating capacity.

➤ Quiet mode
FOR A QUIET LIFE



Ultra-quiet system

Quiet mode can be activated by pressing the fan button to reduce the fan speed and the sound level of the indoor unit.

MAKE YOUR HEAT PUMP SMART

TOSHIBA

Enhance your comfort **at home or away**

Customise your comfort, finding the perfect cooling or heating level for your family at any time, no matter where you are. When at home, simply replace your infrared remote control with the intuitive smart app. This also gives you easy access to your heat pump on the move, allowing you to adapt your comfort to your lifestyle.

Returning Home to a Cozy Environment with Your Heat Pump
Set your preferred temperature and mode from anywhere, and experience the ultimate comfort with your heat pump. All you need is the smart home app, and you can control your heat pump's settings no matter where you are.



Take complete control of your comfort with Toshiba Home AC Control App. Simple to use on all your smart devices

8°C Frost protection mode

Fireplace mode

Hi POWER Boost mode

Silent CDU to reduce the outdoor unit noise level
Wi-Fi Ready



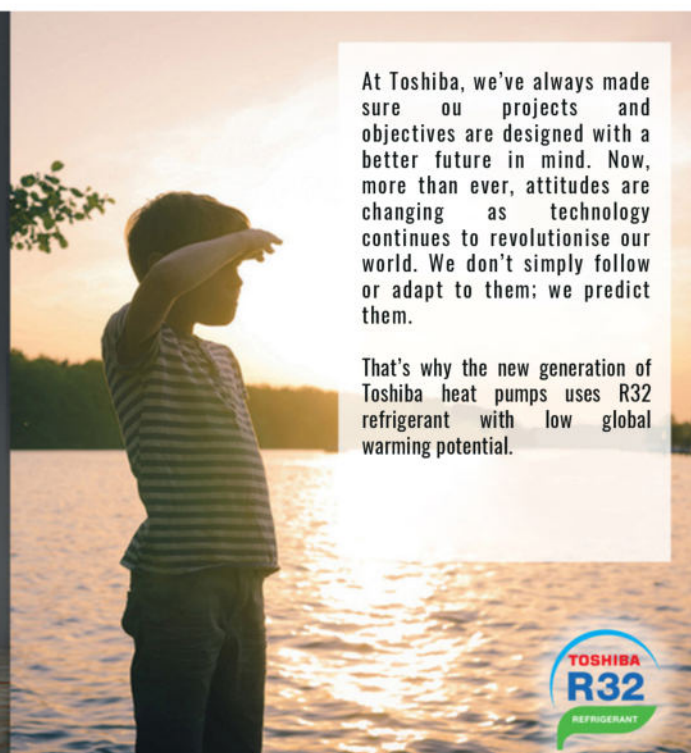
BETTER AIR SOLUTIONS FOR BETTER WORLD

Created by TOSHIBA - INVERTER TECHNOLOGY

AEER up to **4.04** | ACOP up to **4.31**

10 sizes covering
2.0 to 10 kW (Cooling)
2.5 to 11.5 kW (Heating)

Self-cleaning



At Toshiba, we've always made sure our projects and objectives are designed with a better future in mind. Now, more than ever, attitudes are changing as technology continues to revolutionise our world. We don't simply follow or adapt to them; we predict them.

That's why the new generation of Toshiba heat pumps uses R32 refrigerant with low global warming potential.

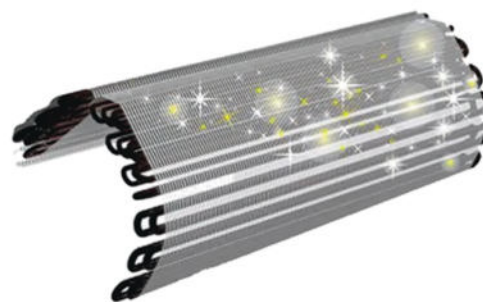


MAGIC COIL® AQUA RESIN COATED

TOSHIBA

Healthy fresh air for longer

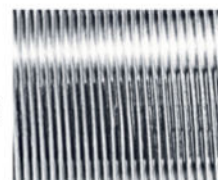
SEIYA is equipped with an aqua resin coated coil, which helps to prevent water and dust from sticking to the coil. When the air conditioning is switched off to drain the contaminated coil, the fan continues to operate to keep the coil clean and dry and to help to maintain the heat pump's high energy efficiency.



**Coil WITHOUT
Aqua Resin Coating**



**Coil WITH
Aqua Resin Coating**



WIRELESS SOLUTION FOR WELL-BEING ON DEMAND

Designed to maximize your comfort, Toshiba offers remote functions that make everyday life simpler.

3D Airflow
Improved comforts by distributing powerful and stable air vol. in 6 unique airflow patterns*
*only for 22-36 models

ON / OFF

8°C Heating
Indoor temperature kept at 8°C, but temperature can set between 5 and 13°C.

Weekly Timer
Toshiba remote control provides a very convenient automatic on and off operation, programmable up to 4 different settings/day and 7 different programs in a week.

Temperature Control

5-Selectable Fan Speed plus Auto

Fire Place
Ensures the unit operates in fan mode to help move the heat generated by the fire place.

Silent Operation
Toshiba's unique noise reduction function of outdoor unit for your neighbourhood comfort.

Power Selector
Select between 50/75/100% for maximum power savings.

ECO
Achieve energy-savings of up to 25% compared with standard settings with no compromise on comfort.*

Wire Connectable Controller
The infrared controller can also be hard-wired.

ELEGANT COMPACT DESIGN IN 3 DIFFERENT SIZES



Model 7-18k. 293x798x226mm



Model 22-30k. 320x1053x245mm



Model 34-36k. 350x1200x280mm

Discover the Seiya: Three Sizes of Chic and Smart Design
Perfect for any setting, whether it's your bedroom, office,
or spacious lounge area, the Seiya is a must-have. Its
stylish and intelligent design will leave a lasting
impression on anyone who sees it. Select the size that best
suits your needs and maximize the benefits of your heat-
pump!



EFFICIENT 3D AIRFLOW 6 AIRFLOW PATTERNS*

*For 22-36k models only

Improved comfort by distributing powerful and stable air volume in 6 unique airflow patterns. The indoor unit provides further airflow and stable air volume in 6 unique patterns to ensure optimum comfort levels. Independent louvers improve comfort with a selection of powerful airflow settings to evenly distribute the airflow, maintaining a consistent and comfortable temperature.



TOSHIBA



SEIYA-R32

| | | RAS-07E2AVG-A | RAS-10E2AVG-A | RAS-13E2AVG-A | RAS-16E2AVG-A | RAS-18E2AVG-A | RAS-22E2AVG-A |
|---------------------------------------|---------|--------------------|--------------------|--------------------|--------------------|---------------------|---------------------|
| Cooling Capacity - Rated | CO kW | 2.00 | 2.50 | 3.50 | 4.20 | 5.00 | 6.00 |
| Cooling Capacity - Range | CO kW | 0.80 - 2.70 | 0.80 - 3.60 | 0.80 - 4.20 | 0.80 - 5.00 | 1.10 - 6.50 | 1.50 - 7.50 |
| Power input [rated (min - max)] | CO kW | 0.53 (0.22 - 0.82) | 0.60 (0.19 - 1.07) | 0.85 (0.22 - 1.13) | 1.13 (0.25 - 1.56) | 1.30 (0.24 - 2.10) | 1.57 (0.28 - 2.10) |
| Operating current [rated (min - max)] | CO A | 2.75 (1.02 - 4.19) | 3.05 (1.02 - 5.22) | 4.75 (1.35 - 5.50) | 5.85 (1.47 - 7.30) | 6.60 (1.52 - 10.40) | 7.75 (1.68 - 9.75) |
| AEER | CO | 4.00 | 4.21 | 3.98 | 3.77 | 3.83 | 3.77 |
| Heating Capacity - Rated | RC kW | 2.50 | 3.20 | 3.70 | 5.40 | 5.80 | 6.90 |
| Heating Capacity - Range | RC kW | 0.90 - 3.30 | 0.90 - 4.80 | 0.90 - 5.60 | 1.30 - 6.20 | 1.00 - 7.70 | 1.00 - 8.50 |
| Power input [rated (min - max)] | RC kW | 0.64 (0.20 - 1.15) | 0.73 (0.18 - 1.58) | 0.82 (0.19 - 1.54) | 1.43 (0.24 - 1.92) | 1.40 (0.19 - 2.25) | 1.69 (0.22 - 2.34) |
| Operating current [rated (min - max)] | RC A | 2.80 (0.91 - 6.20) | 3.65 (0.96 - 7.30) | 4.65 (1.14 - 7.30) | 6.90 (1.44 - 9.25) | 7.00 (1.15 - 10.40) | 8.25 (1.37 - 11.25) |
| ACOP | RC | 3.91 | 4.47 | 4.38 | 3.71 | 4.05 | 3.91 |
| Indoor Unit | | | | | | | |
| Airflow Volume (High/Mid/Low) | CO l/s | 144/103/64 | 197/133/78 | 208/150/134 | 219/150/92 | 219/175/92 | 272/219/172 |
| Mositure removal | l/hr | 0.80 | 1.30 | 1.80 | 2.80 | 3.20 | 3.50 |
| Dimension (WxLxH) | mm | 293 x 798 x 226 | 293 x 798 x 226 | 293 x 798 x 226 | 293 x 798 x 226 | 320 x 1053 x 245 | 320 x 1053 x 245 |
| Net Weight | kg | 9 | 9 | 10 | 10 | 14 | 14 |
| Sound Pressure Cooling/Heating | (dB) | 42/42 | 42/42 | 45/45 | 47/48 | 48/48 | 49/50 |
| Outdoor Unit | | | | | | | |
| Dimension (WxLxH) | mm | 240 x 660 x 530 | 290 x 780 x 550 | 290 x 780 x 550 | 290 x 780 x 550 | 290 x 780 x 550 | 300 x 800 x 630 |
| Net Weight | kg | 22 | 26 | 34 | 34 | 34 | 41 |
| Cooling Operating range (Outside) | CO C | -10 ~ 46 | -10 ~ 46 | -10 ~ 46 | -10 ~ 46 | -10 ~ 46 | -10 ~ 46 |
| Heating Operating range | RC C | -15 ~ 24 | -15 ~ 24 | -15 ~ 24 | -15 ~ 24 | -15 ~ 24 | -15 ~ 24 |
| Sound Pressure Cooling / Heating | (dB) | 48/50 | 49/51 | 50/52 | 52/54 | 54/55 | 54/55 |
| Pipe Size | | | | | | | |
| Liquid Side | (mm) | 6.35 | 6.35 | 6.35 | 6.35 | 6.35 | 6.35 |
| Gas Side | (mm) | 9.52 | 9.52 | 9.52 | 12.70 | 12.70 | 12.70 |
| Maximum Piping Length | (m) | 15 | 20 | 20 | 20 | 20 | 25 |
| Maximum Piping Height difference | (m) | 12 | 12 | 12 | 12 | 12 | 15 |
| Chargeless Length | (m) | 15 | 15 | 15 | 15 | 15 | 15 |
| Compressor type | | Twin Rotary | Twin Rotary | Twin Rotary | Twin Rotary | Twin Rotary | Twin Rotary |
| Power Supply | V/ph/Hz | 220-240V/1Ph/50Hz | 220-240V/1Ph/50Hz | 220-240V/1Ph/50Hz | 220-240V/1Ph/50Hz | 220-240V/1Ph/50Hz | 220-240V/1Ph/50Hz |



S≈IYA



| SEIYA-R32 | | RAS-24EKVG-A RAS-24E2AVG-A | RAS-30EKVG-A RAS-30E2AVG-A | RAS-34EKVG-A RAS-34E2AVG-A | RAS-36EKVG-A RAS-36E2AVG-A |
|---------------------------------------|---------|-------------------------------|-------------------------------|-------------------------------|-------------------------------|
| Cooling Capacity - Rated | CO kW | 7.10 | 8.0 | 9.0 | 10.0 |
| Cooling Capacity - Range | CO kW | 1.90 - 7.80 | 1.50 - 8.20 | 2.80-10.50 | 3.00-11.50 |
| Power input [rated (min - max)] | CO kW | 2.25 (0.40 - 2.60) | 2.0 (0.30 - 2.60) | 2.70 (0.58- 3.50) | 3.20 (0.70 - 4.10) |
| Operating current [rated (min - max)] | CO A | 10.4 (2.29-12.05) | 9.65 (1.80 - 12.70) | 13.10 (3.55-16.55) | 15.05 (4.2 - 19.20) |
| AEER | CO | 3.08 | 3.33 | 3.39 | 3.19 |
| Heating Capacity - Rated | RC kW | 8.00 | 9.00 | 10.00 | 11.50 |
| Heating Capacity - Range | RC kW | 1.70 - 8.80 | 2.55-10.00 | 2.60-11.50 | 3.00-13.00 |
| Power input [rated (min - max)] | RC kW | 2.40 (0.32 - 2.60) | 2.55(0.48 - 3.20) | 2.80 (0.45-3.50) | 3.40 (0.55 - 4.00) |
| Operating current [rated (min - max)] | RC A | 11.0 (1.85 - 12.05) | 12.35(3.00-15.20) | 13.45 (2.75-16.45) | 16.05 (3.30-18.70) |
| ACOP | RC | 3.32 | 3.53 | 3.57 | 3.38 |
| Indoor Unit | | | | | |
| Airflow Volume (High/Mid/Low) | CO l/s | 319/236/203 | 361/278/189 | 458/356/264 | 481/367/275 |
| Mositure removal | l/hr | 4.00 | 4.40 | 4.60 | 4.80 |
| Dimension (WxLxH) | mm | 320 x 1053 x 245 | 320 x 1053 x 245 | 350x1200x280 | 350 x 1200 x 280 |
| Net Weight | kg | 14 | 16 | 19 | 19 |
| Sound Pressure -Cooling/ Heating | (dB) | 49/50 | 50/50 | 51/51 | 52/52 |
| Outdoor Unit | | | | | |
| Dimension (WxLxH) | mm | 300 x 800 x 630 | 300 x 800 x 630 | 300 x 800 x 630 | 300 x 800 x 630 |
| Net Weight | kg | 41 | 41 | 41 | 41 |
| Cooling Operating range (Outside) | CO C | ˚-10 ~ 46 | ˚-10 ~ 46 | ˚-10 ~ 46 | ˚-10 ~ 46 |
| Heating Operating range | RC C | ˚-15 ~ 24 | ˚-15 ~ 24 | ˚-15 ~ 24 | ˚-15 ~ 24 |
| Sound Pressure Cooling /Heating | (dB) | 56/55 | 55/57 | 56/58 | 57/59 |
| Pipe Size | | | | | |
| Liquid Side | (mm) | 6.35 | 6.35 | 6.35 | 6.35 |
| Gas Side | (mm) | 12.70 | 12.70 | 12.70 | 12.70 |
| Maximum Piping Length | (m) | 25 | 25 | 25 | 25 |
| Maximum Piping Height difference | (m) | 15 | 15 | 15 | 15 |
| Chargeless Length | (m) | 15 | 15 | 15 | 15 |
| Compressor type | | Twin Rotary | Twin Rotary | Twin Rotary | Twin Rotary |
| Power Supply | V/ph/Hz | 220-240V/1Ph/50Hz | 220-240V/1Ph/50Hz | 220-240V/1Ph/50Hz | 220-240V/1Ph/50Hz |



SEIYA

SEIYA

HI WALL

Toshiba is committed in improving its products to ensure the highest quality and reliability standards, and to meet local regulations and market requirements.

Product specification in this Brochure are only indicative and are subject to change. These are not intended to be used in place of the engineering or installation databook / manual.

All specification and features are subject to change without prior notice.

All images provided in this catalogue are used for illustration purpose only.

Cooling and heating capacities mentioned are at standard operating conditions.

Date: August 2021

Equipment rates in accordance with GEMS 2019 Determination

Auckland Head Office
207-211 Station Road Penrose,
Auckland
Tel: 09 355 6720
sales@ahi-carrier.co.nz

Napier Branch
31 Ford Road
Napier
Tel: 06 561 0183
sales@ahi-carrier.co.nz

Wellington Branch
Cnr Jarden Mile & McCormack
Place Ngauranga, Wellington
Tel: 04 473 5985
sales@ahi-carrier.co.nz

Christchurch Branch
23 Iversen Terrace Waltham,
Christchurch
Tel: 03 379 0894
sales@ahi-carrier.co.nz

Dunedin Branch
56 Fox Street
Dunedin
Tel: 03 552 0401
sales@ahi-carrier.co.nz

