

Aluminium Roof Cowl Kits

Product Description

Our Roof Cowls are designed for superior performance in residential, commercial, and industrial ventilation systems. The unique construction not only ensures efficient air flow but also provides exceptional protection against environmental elements.

Key Features:

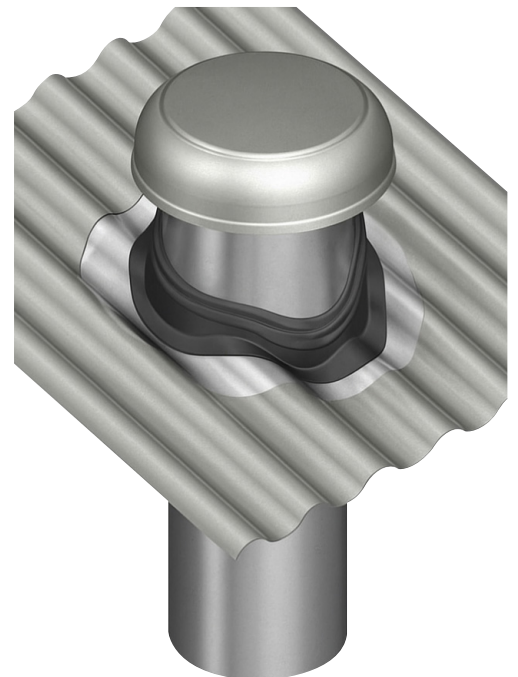
- Superior Rain Protection Innovative design deflects rain, ensuring optimal airflow in all weather conditions.
- Bird, Vermin, and Rain Guard Built-in mesh and structural barriers minimize entry of birds, vermin, and rainwater.
- Efficient Air/Exhaust Expulsion Optimized internal baffle structure improves ventilation performance.
- Cost-Effective Installation Designed to integrate seamlessly with standard roof flashings, eliminating the need for complex sealing systems.

Inclusions:

- Roof Cowl (Weatherproof Type).
- 600mm or 900mm Galvanized Duct (Specify size when ordering)
- Rubber Roof Flashing (UV & Weather Resistant).
- Sealant Tube (Roof-safe, waterproof).
-

Applications:

- Bathroom/kitchen exhaust termination.
- General HVAC duct outlets.
- Warehouse or workshop ventilation.

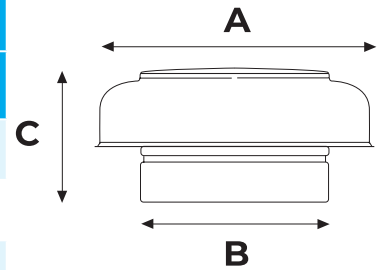


Aluminium Roof Cowl Kits

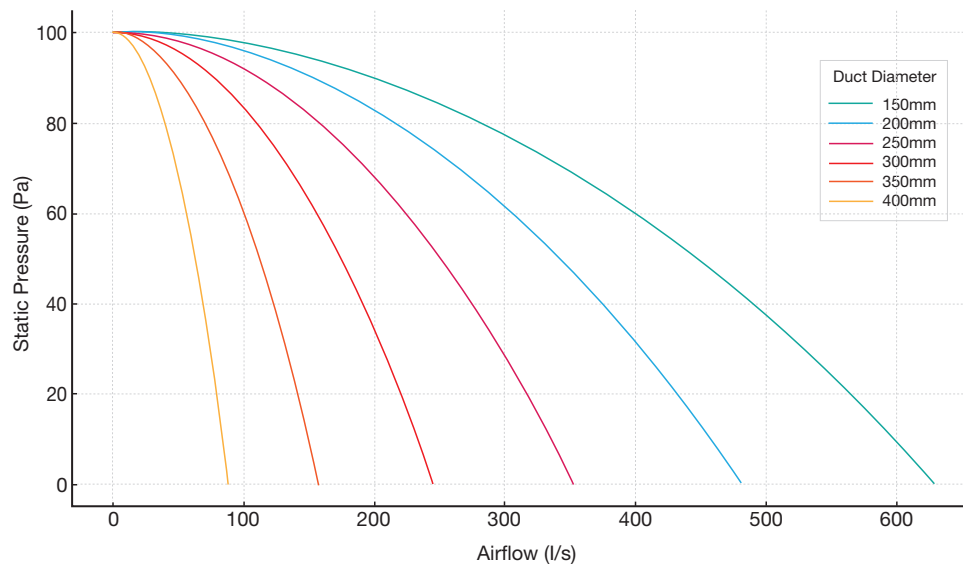


Item	Description
KRC1500	150mm
KRC2000	200mm
KRC2500	250mm

Product Size		
A	B	C
236	158	151
315	210	151
407	250	192



Performance Curve



Installation Notes:

- Flashing and sealant are included for leak-free integration with most roof profiles.
- Compatible with metal and tile roofs.
- Secure with roofing screws (not included).
- Ensure cowl top clearance meets local code requirements for ventilation outlets.