

PRODUCT CATALOGUE



2025



WELCOME



HVAC Depot Ltd is a leading provider of heating, ventilation, and air conditioning solutions, recognized for its innovation and commitment to excellence. With a long-standing history, we have become a trusted name in the industry by focusing on optimizing indoor comfort and promoting sustainability. Our approach combines advanced technology, expert knowledge, and a strong dedication to customer satisfaction.

Our team of experienced professionals is passionate about delivering comprehensive HVAC solutions that enhance your living and working environments. As part of the Beijer Ref Group, we leverage financial stability, sourcing expertise, and global buying power, enabling our customers to compete effectively every day.

BEIJER REF
New Zealand

CONTENTS

02

Welcome

04

Flexible Ducting



09

Spiral Ducting



11

Round Duct Fittings



27

AC Unit & Accessories



39

Airloc



45

PVC Duct



49

Light Weight Panels



54

Plenums & Silencers



56

Grilles & Fittings



72

Monkeytoe



74

Commercial Ventilation



77

Consumables



90

Insulation



FLEXIBLE ACOUSTIC

Flexilok® - Acoustic R0.6

The Flexilok Acoustic thermally and acoustically insulated fire-retardant ducting is built tough for durability and quiet performance. Its outer stainless-steel rib maintain shape and prevent sagging or glue failure over time, unlike traditional plastic-ribbed or non-ribbed ducts.

Applicable

- Fully complies to AS4254 (2012) & AS1530 Pt3 and New Zealand.



R1.5 DUCTING

AVAILABLE

PLEASE SEE IN-STORE
FOR MORE INFORMATION

Item	Description
DFA1503	Flexilok Acoustic Duct 150mm Nude 3m
DFA2003	Flexilok Acoustic Duct 200mm Nude 3m
DFA2503	Flexilok Acoustic Duct 250mm Nude 3m
DFA3003	Flexilok Acoustic Duct 300mm Nude 3m
DFA3503	Flexilok Acoustic Duct 350mm Nude 3m
DFA4003	Flexilok Acoustic Duct 400mm Nude 3m

Item	Description
DFA1513	Flexilok Acoustic Duct 150mm Insulated R0.6 3m
DFA2013	Flexilok Acoustic Duct 200mm Insulated R0.6 3m
DFA2513	Flexilok Acoustic Duct 250mm Insulated R0.6 3m
DFA3013	Flexilok Acoustic Duct 300mm Insulated R0.6 3m
DFA3513	Flexilok Acoustic Duct 350mm Insulated R0.6 3m
DFA4013	Flexilok Acoustic Duct 400mm Insulated R0.6 3m

Item	Description
DFA1506	Flexilok Acoustic Duct 150mm Nude 6m
DFA2006	Flexilok Acoustic Duct 200mm Nude 6m
DFA2506	Flexilok Acoustic Duct 250mm Nude 6m
DFA3006	Flexilok Acoustic Duct 300mm Nude 6m
DFA3506	Flexilok Acoustic Duct 350mm Nude 6m
DFA4006	Flexilok Acoustic Duct 400mm Nude 6m

Item	Description
DFA1516	Flexilok Acoustic Duct 150mm Insulated R0.6 6m
DFA2016	Flexilok Acoustic Duct 200mm Insulated R0.6 6m
DFA2516	Flexilok Acoustic Duct 250mm Insulated R0.6 6m
DFA3016	Flexilok Acoustic Duct 300mm Insulated R0.6 6m
DFA3516	Flexilok Acoustic Duct 350mm Insulated R0.6 6m
DFA4016	Flexilok Acoustic Duct 400mm Insulated R0.6 6m

FLEXIBLE ACOUSTIC

Flexilok® - Acoustic R1.0

- Stainless steel inner core maintains structure and ensures the duct stays at correct diameter.
- Operating temperature range -10° to +80°.

Applicable Codes

- Fully complies to AS4254 (2012) & AS1530 Pt3 and New Zealand Building Code.



Item	Description
DFA1523	Flexilok Acoustic Duct 150mm Insulated R1.0 3m
DFA2023	Flexilok Acoustic Duct 200mm Insulated R1.0 3m
DFA2523	Flexilok Acoustic Duct 250mm Insulated R1.0 3m
DFA3023	Flexilok Acoustic Duct 300mm Insulated R1.0 3m
DFA3523	Flexilok Acoustic Duct 350mm Insulated R1.0 3m
DFA4023	Flexilok Acoustic Duct 400mm Insulated R1.0 3m

Item	Description
DFA1526	Flexilok Acoustic Duct 150mm Insulated R1.0 6m
DFA2026	Flexilok Acoustic Duct 200mm Insulated R1.0 6m
DFA2526	Flexilok Acoustic Duct 250mm Insulated R1.0 6m
DFA3026	Flexilok Acoustic Duct 300mm Insulated R1.0 6m
DFA3526	Flexilok Acoustic Duct 350mm Insulated R1.0 6m
DFA4026	Flexilok Acoustic Duct 400mm Insulated R1.0 6m

FLEXIBLE DUCTING

Flexilok® - Nude

- Stainless steel inner core maintains structure and ensures the duct stays at correct diameter.
- Operating temperature range -10° to +80°.

Applicable Codes

- Fully complies to AS4254 (2012) & AS1530 Pt3 and New Zealand Building Code.
- Material Group Number of 1 or 1S as per NZBC.



Item	Description
DFF1003	Flexilok Duct 100mm Nude 3m
DFF1503	Flexilok Duct 150mm Nude 3m
DFF2003	Flexilok Duct 200mm Nude 3m
DFF2503	Flexilok Duct 250mm Nude 3m
DFF3003	Flexilok Duct 300mm Nude 3m
DFF3503	Flexilok Duct 350mm Nude 3m
DFF4003	Flexilok Duct 400mm Nude 3m

Item	Description
DFF1006	Flexilok Duct 100mm Nude 6m
DFF1506	Flexilok Duct 150mm Nude 6m
DFF2006	Flexilok Duct 200mm Nude 6m
DFF2506	Flexilok Duct 250mm Nude 6m
DFF3006	Flexilok Duct 300mm Nude 6m
DFF3506	Flexilok Duct 350mm Nude 6m
DFF4006	Flexilok Duct 400mm Nude 6m

FLEXIBLE DUCTING

Flexilok® - Insulated R0.6

- Duct sleeve: fire retardant 100µm black low density polyethylene and UV stabilised.
- Duct insulation: R0.6.

Applicable Codes

- Fully complies to AS4254 (2012) & AS1530 Pt3 and New Zealand Building Code.
- Material Group Number of 1 or 1S as per NZBC.



FLEXIBLE DUCTING

Flexilok® - Insulated R1.0

- Duct sleeve: fire retardant 100µm black low density polyethylene and UV stabilised.
- Duct insulation: R1.0.

Applicable Codes

- Fully complies to AS4254 (2012) & AS1530 Pt3 and New Zealand Building Code.
- Material Group Number of 1 or 1S as per NZBC.



Item	Description
DFF1513	Flexilok Duct 150mm Insulated R0.6 3m
DFF2013	Flexilok Duct 200mm Insulated R0.6 3m
DFF2513	Flexilok Duct 250mm Insulated R0.6 3m
DFF3013	Flexilok Duct 300mm Insulated R0.6 3m
DFF3513	Flexilok Duct 350mm Insulated R0.6 3m
DFF4013	Flexilok Duct 400mm Insulated R0.6 3m

Item	Description
DFF1516	Flexilok Duct 150mm Insulated R0.6 6m
DFF2016	Flexilok Duct 200mm Insulated R0.6 6m
DFF2516	Flexilok Duct 250mm Insulated R0.6 6m
DFF3016	Flexilok Duct 300mm Insulated R0.6 6m
DFF3516	Flexilok Duct 350mm Insulated R0.6 6m
DFF4016	Flexilok Duct 400mm Insulated R0.6 6m

Item	Description
DFF1523	Flexilok 150mm Insulated R1.0 3m
DFF2023	Flexilok 200mm Insulated R1.0 3m
DFF2523	Flexilok 250mm Insulated R1.0 3m
DFF3023	Flexilok 300mm Insulated R1.0 3m
DFF3523	Flexilok 350mm Insulated R1.0 3m
DFF4023	Flexilok 400mm Insulated R1.0 3m
DFF4023	Flexilok 400mm Insulated R1.0 3m

Item	Description
DFF2026	Flexilok 200mm Insulated R1.0 6m
DFF2526	Flexilok 250mm Insulated R1.0 6m
DFF3026	Flexilok 300mm Insulated R1.0 6m
DFF3526	Flexilok 350mm Insulated R1.0 6m
DFF4026	Flexilok 400mm Insulated R1.0 6m

SEMI RIGID DUCTING

Aluminium

- Semi-rigid aluminium ducting is a lightweight, flexible yet strong corrugated aluminium duct. It is spiral wound with a unique interlocked and knotted continuous seam.
- Operating temperature range -30° to +150°.

Applicable Codes

- Fully complies with the New Zealand Building Code.



Item	Description
DSR1003	HYVENT 100mm Semi Rigid Ducting Nude 3MTR
DSR1503	HYVENT 150mm Semi Rigid Ducting Nude 3MTR
DSR2003	HYVENT 200mm Semi Rigid Ducting Nude 3MTR

HYVENT FLEXI DUCT

Metallized Flexi Duct Nude

- Duct with multi-layer aluminium/polyester laminate outer surface, for general use in exhaust and ventilation systems.

Specification

- Operating temperature: -20C to +80C.



Item	Description
DFM1003	HYVENT Flexible Duct 100mm Nude 3m
DFM1503	HYVENT Flexible Duct 150mm Nude 3m
DFM2003	HYVENT Flexible Duct 200mm Nude 3m
DFM2503	HYVENT Flexible Duct 250mm Nude 3m
DFM3003	HYVENT Flexible Duct 300mm Nude 3m
DFM3503	HYVENT Flexible Duct 350mm Nude 3m
DFM4003	HYVENT Flexible Duct 400mm Nude 3m

Item	Description
DFM1006	HYVENT Flexible Duct 100mm Nude 6m
DFM1506	HYVENT Flexible Duct 150mm Nude 6m
DFM2006	HYVENT Flexible Duct 200mm Nude 6m
DFM2506	HYVENT Flexible Duct 250mm Nude 6m
DFM3006	HYVENT Flexible Duct 300mm Nude 6m
DFM3506	HYVENT Flexible Duct 350mm Nude 6m
DFM4006	HYVENT Flexible Duct 400mm Nude 6m

HYVENT FLEXI DUCT

Metallized Flexi Duct Insulated

- Duct sleeve: tear and puncture resistant foil PET composite material that is bonded.
- Duct insulation: R0.6.

Applicable Codes

- Fully complies to AS4254 (2012) & AS1530 Pt3 and New Zealand Building Code.



Item	Description
DFM1513	HYVENT Flexilok Duct 150mm Insulated R0.6 3m
DFM2013	HYVENT Flexilok Duct 200mm Insulated R0.6 3m
DFM2513	HYVENT Flexilok Duct 250mm Insulated R0.6 3m
DFM3013	HYVENT Flexilok Duct 300mm Insulated R0.6 3m
DFM3513	HYVENT Flexilok Duct 350mm Insulated R0.6 3m
DFM4013	HYVENT Flexilok Duct 400mm Insulated R0.6 3m

Item	Description
DFM1516	HYVENT Flexilok Duct 150mm Insulated R0.6 6m
DFM2016	HYVENT Flexilok Duct 200mm Insulated R0.6 6m
DFM2516	HYVENT Flexilok Duct 250mm Insulated R0.6 6m
DFM3016	HYVENT Flexilok Duct 300mm Insulated R0.6 6m
DFM3516	HYVENT Flexilok Duct 350mm Insulated R0.6 6m
DFM4016	HYVENT Flexilok Duct 400mm Insulated R0.6 6m

HYVENT FLEXI DUCT

Metallized Flexi Duct Insulated

- Duct sleeve: tear and puncture resistant foil PET composite material that is bonded.
- Duct insulation: R1.0.

Applicable Codes

- Fully complies to AS4254 (2012) & AS1530 Pt3 and New Zealand Building Code.



Item	Description
DFM1023	HYVENT Flexible Duct 100mm Insulated R1.0 3m
DFM1523	HYVENT Flexible Duct 150mm Insulated R1.0 3m
DFM2023	HYVENT Flexible Duct 200mm Insulated R1.0 3m
DFM2523	HYVENT Flexible Duct 250mm Insulated R1.0 3m
DFM3023	HYVENT Flexible Duct 300mm Insulated R1.0 3m
DFM3523	HYVENT Flexible Duct 350mm Insulated R1.0 3m
DFM4023	HYVENT Flexible Duct 400mm Insulated R1.0 3m

Item	Description
DFM1026	HYVENT Flexible Duct 100mm Insulated R1.0 6m
DFM1526	HYVENT Flexible Duct 150mm Insulated R1.0 6m
DFM2026	HYVENT Flexible Duct 200mm Insulated R1.0 6m
DFM2526	HYVENT Flexible Duct 250mm Insulated R1.0 6m
DFM3026	HYVENT Flexible Duct 300mm Insulated R1.0 6m
DFM3526	HYVENT Flexible Duct 350mm Insulated R1.0 6m
DFM4026	HYVENT Flexible Duct 400mm Insulated R1.0 6m

SPIRAL DUCT

Galvanised Nude

- Spiral can be crimped & swaged at a nominal fee.
- Spiral can also be made in Stainless steel, please contact us for pricing.

Applicable Codes

- SMACNA Compliant.



Item	Description
DSG1003	Spiral Ducting Galv26/0.45mm 100dia 2.95m L
DSG1503	Spiral Ducting Galv26/0.45mm 150dia 2.95m L
DSG2003	Spiral Ducting Galv26/0.45mm 200dia 2.95m L
DSG2503	Spiral Ducting Galv26/0.45mm 250dia 2.95m L
DSG3003	Spiral Ducting Galv26/0.45mm 300dia 2.95m L
DSG3503	Spiral Ducting Galv26/0.45mm 350dia 2.95m L
DSG4003	Spiral Ducting Galv24/0.55mm 400dia 2.95m L
DSG4503	Spiral Ducting Galv24/0.55mm 450dia 2.95m L
DSG5003	Spiral Ducting Galv24/0.55mm 500dia 2.95m L
DSG6003	Spiral Ducting Galv24/0.55mm 600dia 2.95m L
DSG8003	Spiral Ducting Galv22/0.75mm 800dia 2.95m L
DSG0103	Spiral Ducting Galv20/0.95mm 1000dia 2.95m L

SPIRAL DUCT

25mm Duct Wrapped

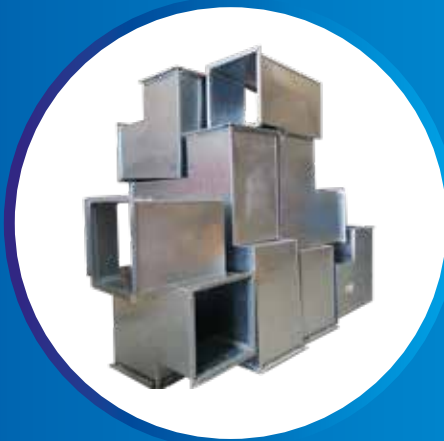
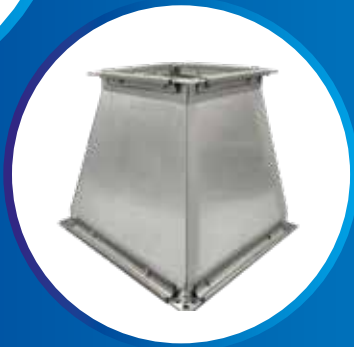
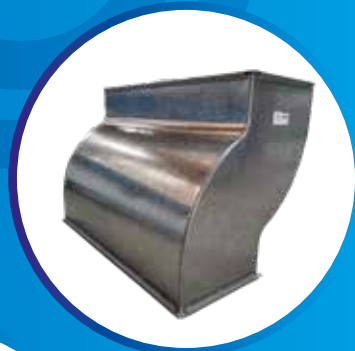
- Duct Insulation: R0.6.
- Insulation (faced) is made with up to 80% recycled glass and a sustainable, bio-based binder that contains no added formaldehyde.



Item	Description
DSG1013	Spiral Duct Wrapped 25mm Galv26/0.45mm 100dia 2.95m L
DSG1513	Spiral Duct Wrapped 25mm Galv26/0.45mm 150dia 2.95m L
DSG2013	Spiral Duct Wrapped 25mm Galv26/0.45mm 200dia 2.95m L
DSG2513	Spiral Duct Wrapped 25mm Galv26/0.45mm 250dia 2.95m L
DSG3013	Spiral Duct Wrapped 25mm Galv26/0.45mm 300dia 2.95m L
DSG3513	Spiral Duct Wrapped 25mm Galv26/0.45mm 350dia 2.95m L
DSG4013	Spiral Duct Wrapped 25mm Galv24/0.55mm 400dia 2.95m L
DSG4513	Spiral Duct Wrapped 25mm Galv24/0.55mm 450dia 2.95m L
DSG5013	Spiral Duct Wrapped 25mm Galv24/0.55mm 500dia 2.95m L
DSG6013	Spiral Duct Wrapped 25mm Galv24/0.55mm 600dia 2.95m L

HVAC Depot's fully equipped workshop can manufacture a range of standard ducts and other custom items.

Please contact us with your requirements.



MANUAL IN-LINE DAMPENER

Galvanised Steel



Item	Description
FDM1000	100dia
FDM1500	150dia
FDM2000	200dia
FDM2500	250dia
FDM3000	300dia
FDM3500	350dia
FDM4000	400dia
FDM4500	450dia
FDM5000	500dia
FDM5500	550dia
FDM6000	600dia

JOINER

Galvanised Steel



Item	Description
FJG1000	100mm dia
FJG1250	125mm dia
FJG1500	150mm dia
FJG2000	200mm dia
FJG2500	250mm dia
FJG3000	300mm dia
FJG3500	350mm dia
FJG4000	400mm dia
FJG4500	450mm dia
FJG5000	500mm dia
FJG5500	550mm dia
FJG6000	600mm dia
FJG7000	700mm dia
FJG7500	750mm dia
FJG8000	800mm dia
FJG8500	850mm dia
FJG9000	900mm dia

G/S REDUCER

Galvanised Steel



Item	Description
FRG1510	150/100dia
FRG1512	150/125dia
FRG2010	200/100dia
FRG2015	200/150dia
FRG2515	250/150dia
FRG2520	250/200dia
FRG3015	300/150dia
FRG3020	300/200dia
FRG3025	300/250dia
FRG3525	350/250dia
FRG3530	350/300dia
FRG4030	400/300dia
FRG4035	400/350dia
FRG4540	450/400dia
FRG5045	500/450dia

TUBE

Galvanised Steel



Item	Description
TRG1006	100dia 600mm L
TRG1009	100dia 900mm L
TRG1206	125dia 600mm L
TRG1209	125dia 900mm L
TRG1506	150dia 600mm L
TRG1509	150dia 900mm L
TRG2006	200dia 600mm L
TRG2506	250dia 600mm L
TRG3006	300dia 600mm L
TRG3509	350dia 900mm L

TUBE DIFFUSER

Diffuser

- Tube diffusers can be used to provide fresh air or to extract fumes.



Item	Description
TRG1012	100dia 1200mm L
TRG1512	150dia 1200mm L
TRG2012	200dia 1200mm L
TRG2512	250dia 1200mm L
TRG3012	300dia 1200mm L
TRG3512	350dia 1200mm L

FIXED BEND

Galvanised Steel



Item	Description
FBF1590	150dia@90deg
FBF2090	200dia@90deg
FBF2590	250dia@90deg
FBF3090	300dia@90deg
FBF3590	350dia@90deg
FBF4090	400dia@90deg
FBF4590	450dia@90deg
FBF5090	500dia@90deg
FBF6090	600dia@90deg

Item	Description
FBF1545	150dia@45deg
FBF2045	200dia@45deg
FBF2545	250dia@45deg
FBF3045	300dia@45deg
FBF3545	350dia@45deg
FBF4045	400dia@45deg

ADJUSTABLE BENDS (SAB)

Galvanised Steel



Item	Description
FBA0100	100dia 90deg
FBA0150	150dia 90deg
FBA0200	200dia 90deg
FBA0250	250dia 90deg
FBA0300	300dia 90deg
FBA0350	350dia 90deg

Item	Description
FBA0104	100dia 45deg
FBA0154	150dia 45deg
FBA0204	200dia 45deg
FBA0254	250dia 45deg
FBA0304	300dia 45deg
FBA0354	350dia 45deg
FBA0404	400dia 45Deg

FIXED BENDS WITH LIP SEAL

Galvanised Steel



Item	Description
FBS1590	150dia@90deg
FBS2090	200dia@90deg
FBS2590	250dia@90deg
FBS3090	300dia@90deg
FBS3590	350dia@90deg
FBS4090	400dia@90deg
FBS4590	450dia@90deg
FBS5090	500dia@90deg
FBS6090	600dia@90deg

Item	Description
FBS1545	150dia@45deg
FBS2045	200dia@45deg
FBS2545	250dia@45deg
FBS3045	300dia@45deg

END CAP

Galvanised Steel



Item	Description
FEG1250	125dia
FEG1500	150dia
FEG2000	200dia
FEG2500	250dia
FEG3000	300dia
FEG3500	350dia
FEG4000	400dia
FEG5000	500dia
FEG5500	550dia
FEG6000	600dia
FEG6500	650dia
FEG7000	700dia
FEG7500	750dia
FEG8000	800dia

DAMPER BLADE

Galvanised Steel



Item	Description
FBL1000	Blade only 100 dia
FBL1500	Blade only 150 dia
FBL2000	Blade only 200 dia
FBL2500	Blade only 250 dia
FBL3000	Blade only 300 dia
FBL3500	Blade only 350 dia
FBL4000	Blade only 400 dia
FBL4500	Blade only 450 dia
FBL5000	Blade only 500 dia

ANGLE TEE

Galvanised Steel



Item	Description
FAT1030	30DEG 100MM
FAT1230	30DEG 125MM
FAT1530	30DEG 150MM
FAT1730	30DEG 175MM
FAT2030	30DEG 200MM
FAT2230	30DEG 225MM
FAT2530	30DEG 250MM
FAT3000	30DEG 300MM
FAT3530	30DEG 350MM
FAT4030	30DEG 400MM
FAT4530	30DEG 450MM
FAT5030	30DEG 500MM
FAT5530	30DEG 550MM
FAT6030	30DEG 600MM

Item	Description
FAT1045	45DEG 100MM
FAT1245	45DEG 125MM
FAT1545	45DEG 150MM
FAT1745	45DEG 175MM
FAT2045	45DEG 200MM
FAT2245	45DEG 225MM
FAT2545	45DEG 250MM
FAT3045	45DEG 300MM
FAT3545	45DEG 350MM
FAT4045	45DEG 400MM
FAT4545	45DEG 450MM
FAT5045	45DEG 500MM
FAT5545	45DEG 550MM
FAT6045	45DEG 600MM

REDUCING ANGLE TEE

Galvanised Steel



Item	Description
FRB1230	30DEG 125MM
FRB1530	30DEG 150MM
FRB1730	30DEG 175MM
FRB2030	30DEG 200MM
FRB2230	30DEG 225MM
FRB2530	30DEG 250MM
FRB2730	30DEG 275MM
FRB3030	30DEG 300MM
FRB3530	30DEG 350MM
FRB4030	30DEG 400MM
FRB4530	30DEG 450MM
FRB5030	30DEG 500MM
FRB5530	30DEG 550MM
FRB6030	30DEG 600MM

Item	Description
FRB1245	45DEG 125MM
FRB1545	45DEG 150MM
FRB1745	45DEG 175MM
FRB2045	45DEG 200MM
FRB2245	45DEG 225MM
FRB2545	45DEG 250MM
FRB2745	45DEG 275MM
FRB3045	45DEG 300MM
FRB3545	45DEG 350MM
FRB4045	45DEG 400MM
FRB4545	45DEG 450MM
FRB5045	45DEG 500MM
FRB5545	45DEG 550MM
FRB6045	45DEG 600MM

EQUAL TEE

Galvanised Steel



Item	Description
FTE1090	90DEG 100MM
FTE1590	90DEG 150MM
FTE2090	90DEG 200mm
FTE2590	90DEG 250MM
FTE3090	90DEG 300MM
FTE3590	90DEG 350MM
FTE4090	90DEG 400MM
FTE4590	90DEG 450MM
FTE5090	90DEG 500MM
FTE5590	90DEG 550MM
FTE6090	90DEG 600MM

EQUAL Y BRANCH

Galvanised Steel



Item	Description
FBY1000	100MM
FBY1500	150MM
FBY2000	200MM
FBY2500	250MM
FBY3000	300MM
FBY3500	350MM
FBY4000	400MM
FBY4500	450MM
FBY5000	500MM
FBY5500	550MM
FBY6000	600MM

REDUCING Y BRANCH

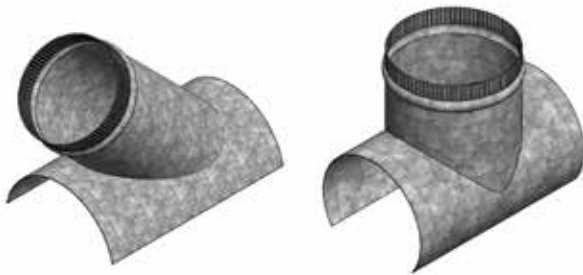
Galvanised Steel



Item	Description
FBY1501	150 to all
FBY2001	200 to all
FBY2501	250 to all
FBY3001	300 to all
FBY3501	350 to all
FBY4001	400 to all
FBY4501	450 to all
FBY5001	500 to all
FBY5501	550 to all
FBY6001	600 to all

SADDLE TAKE-OFF

Galvanised Steel

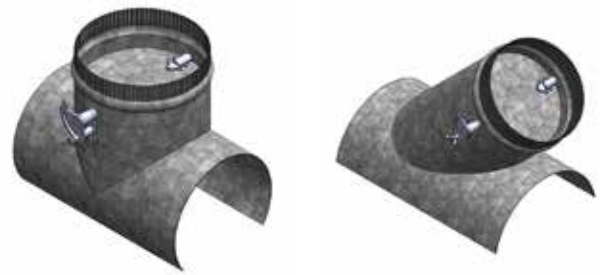


Item	Description
FST1045	100MM 45DEG
FST1245	125MM 45DEG
FST1545	150MM 45DEG
FST2045	200MM 45DEG
FST2545	250MM 45DEG
FST3045	300MM 45DEG
FST3545	350MM 45DEG
FST4045	400MM 45DEG
FST4545	450MM 45DEG
FST5045	500MM 45DEG
FST5545	550MM 45DEG
FST6045	600MM 45DEG

Item	Description
FST1090	100mm 90DEG
FST1590	150mm 90DEG
FST2090	200MM 90DEG
FST2590	250MM 90DEG
FST3090	300MM 90DEG
FST3590	350MM 90DEG
FST4090	400MM 90DEG
FST4590	450MM 90DEG
FST5090	500MM 90DEG
FST5590	550MM 90DEG
FST6090	600MM 90DEG

SADDLE TAKE-OFFS WITH DAMPER

Galvanised Steel

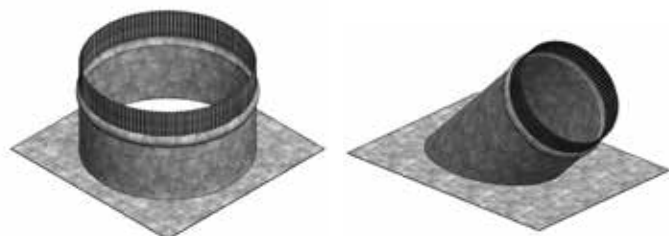


Item	Description
FST1091	100MM 90DEG WITH DAMPER
FST1291	125MM 90DEG WITH DAMPER
FST1591	150MM 90DEG WITH DAMPER
FST2091	200MM 90DEG WITH DAMPER
FST2591	250MM 90DEG WITH DAMPER
FST3091	300MM 90DEG WITH DAMPER
FST3591	350MM 90DEG WITH DAMPER
FST4091	400MM 90DEG WITH DAMPER
FST4591	450MM 90DEG WITH DAMPER
FST5091	500MM 90DEG WITH DAMPER
FST5591	550MM 90DEG WITH DAMPER
FST6091	600MM 90DEG WITH DAMPER

Item	Description
FST1041	100MM 45DEG WITH DAMPER
FST1241	125MM 45DEG WITH DAMPER
FST1541	150MM 45DEG WITH DAMPER
FST2041	200MM 45DEG WITH DAMPER
FST2541	250MM 45DEG WITH DAMPER
FST3041	300MM 45DEG WITH DAMPER
FST3541	350MM 45DEG WITH DAMPER
FST4041	400MM 45DEG WITH DAMPER
FST4541	450MM 45DEG WITH DAMPER
FST5041	500MM 45DEG WITH DAMPER
FST5541	550MM 45DEG WITH DAMPER
FST6041	600MM 45DEG WITH DAMPER

FLAT TAKE OFF

Galvanised Steel

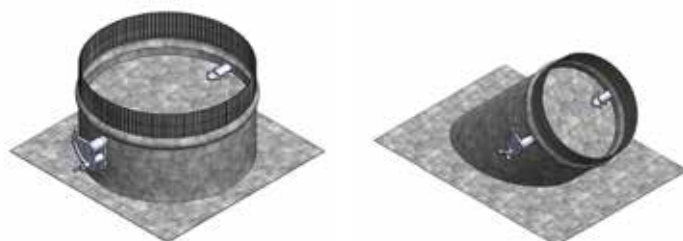


Item	Description
FFT1090	90DEG 100MM
FFT1290	90DEG 125MM
FFT1590	90DEG 150MM
FFT2090	90DEG 200MM
FFT2590	90DEG 250MM
FFT3090	90DEG 300MM
FFT3590	90DEG 350MM
FFT4090	90DEG 400MM
FFT4590	90DEG 450MM
FFT5090	90DEG 500MM
FFT5590	90DEG 550MM
FFT6090	90DEG 600MM

Item	Description
FFT1045	45DEG 100MM
FFT1545	45DEG 150MM
FFT2045	45DEG 200MM
FFT2545	45DEG 250MM
FFT3045	45DEG 300MM
FFT3545	45DEG 350MM
FFT4045	45DEG 400MM
FFT4545	45DEG 450MM

FLAT TAKE OFF WITH DAMPER

Galvanised Steel



Item	Description
FFT1091	90DEG 100MM WITH DAMPER
FFT1591	90DEG 150MM WITH DAMPER
FFT2091	90DEG 200MM WITH DAMPER
FFT2591	90DEG 250MM WITH DAMPER
FFT3091	90DEG 300MM WITH DAMPER
FFT3591	90DEG 350MM WITH DAMPER
FFT4091	90DEG 400MM WITH DAMPER
FFT4591	90DEG 450MM WITH DAMPER
FFT5091	90DEG 500MM WITH DAMPER
FFT5591	90DEG 550MM WITH DAMPER
FFT6091	90DEG 600MM WITH DAMPER

Item	Description
FFT1041	45DEG 100MM WITH DAMPER
FFT1541	45DEG 150MM WITH DAMPER
FFT2041	45DEG 200MM WITH DAMPER
FFT2541	45DEG 250MM WITH DAMPER
FFT3041	45DEG 300MM WITH DAMPER
FFT3541	45DEG 350MM WITH DAMPER
FFT4041	45DEG 400MM WITH DAMPER
FFT4541	45DEG 450MM WITH DAMPER
FFT5041	45DEG 500MM WITH DAMPER
FFT5541	45DEG 550MM WITH DAMPER
FFT6041	45DEG 600MM WITH DAMPER

BELLMOUTH SPIGOT

Galvanised Steel



Item	Description
FBM1090	90DEG 100MM
FBM1290	90DEG 125MM
FBM1590	90DEG 150MM
FBM2090	90DEG 200MM
FBM2590	90DEG 250MM
FBM3090	90DEG 300MM
FBM3590	90DEG 350MM
FBM4090	90DEG 400MM
FBM4590	90DEG 450MM
FBM5090	90DEG 500MM
FBM5590	90DEG 550MM
FBM6090	90DEG 600MM

BELLMOUTH SPIGOT WITH DAMPER

Galvanised Steel



Item	Description
FBM1091	90DEG 100MM WITH DAMPER
FBM1291	90DEG 125MM WITH DAMPER
FBM1591	90DEG 150MM WITH DAMPER
FBM2091	90DEG 200MM WITH DAMPER
FBM2591	90DEG 250MM WITH DAMPER
FBM3091	90DEG 300MM WITH DAMPER
FBM3591	90DEG 350MM WITH DAMPER
FBM4091	90DEG 400MM WITH DAMPER
FBM4591	90DEG 450MM WITH DAMPER
FBM5091	90DEG 500MM WITH DAMPER
FBM5591	90DEG 550MM WITH DAMPER
FBM6091	90DEG 600MM WITH DAMPER

SAMSUNG



AI Smart AIRISE WindFree™

Comfort meets smart.

Equipped with Fast Heating and Cooling, the AIRISE cools down and warms up rooms quietly. With over 21,000 micro-holes, it disperses a gentle, uniform breeze that reaches every corner of your room. And with AI design at its core, it can optimise cooling & heating modes based on room conditions for extra comfort and energy savings.



Windfree™ Comfort Cooling¹

Cools the room gently without harsh air flow.



Fast Heating & Cooling²

Rapidly heat or cool the room at a button press.



AI Auto³

Optimises Heating & Cooling based on room conditions and usage patterns.



SmartThings⁴

Track your usage and set Routines from your phone.

AR18BXECNWKNSA (5.0 kW capacity) / AR24BXECNWKNSA (7.0 kW capacity)

1. WindFree™: In accordance with the definition of ASHRAE (American Society of Heating, Refrigerating and Air-Conditioning Engineers), still air is an air flow moving at a speed of 0.15 m/s or slower, without creating cold drafts. 2. Fast Heating & Cooling: Tested on the AR12TXCAAWKEU model compared with the Samsung conventional AQ12EASER model, measuring the time taken to reduce the room temperature from 33°C to 25°C & heat the room from 9°C to 20°C. 3. AI Auto: Automatically optimise the various modes by analysing room conditions and usage patterns. A Wi-Fi connection and a Samsung account are required. AI Auto optimisation may vary by usage patterns & environment. 4. SmartThings: Available on compatible Android and iOS devices. A Wi-Fi connection and a Samsung account are required. Download and installation of SmartThings app are required.

Available Now at HVAC Depot

sales@hvacdepot.co.nz | 09 6002286 | hvacdepot.co.nz

GREE

HEAT PUMPS



Gree Aoky Window & Wall Air Conditioner



Gree Hi-wall Inverter Heat Pumps



Gree T-Fresh Floor Standing Heat Pump



Gree Mini Floor Mount Heat Pumps



Gree Free Match Multi Split System



Gree U-Match R32 Air Conditioners for Light Commercial



Gree Zone Control System



Gree GMV6 Modular Inverter VRF System



Gree R290 Inverter Hot Water Heat Pump

Discover the full range of Gree Heat Pumps at HVAC Depot.

Reach out to us for more details!

TOSHIBA

HEAT PUMPS

Think Toshiba. Think reliability.



Better Air Solutions



SEIYA
Experience
the sound
of silence





Golden Fin
Protective
Coating



Wi-Fi Kit
Included



Demand
Response
Enabled



Sleep Mode
Do Not Disturb



UV Lamp
In-built



relax, it's cool

INVENTOR OF MODERN
AIR CONDITIONING

ALLURE
Plus



 **GREE**
HEAT PUMPS

ASPEN MINI ORANGE - SILENT

Compact Condensate Pump



Item	Description
T0940	Silent Pump: 116mm L x 39mm W x 51mm H Reservoir: 80mm H x 39mm W x 34mm H

ASPEN MAX ORANGE

Compact Condensate Pump



Item	Description
T0941	Pump: 122mm L x 44mm W x 66mm H Reservoir: 80mm L x 44mm W x 34mm H

ASPEN MINI LIME - SILENT

Compact Condensate Pump



Item	Description
T0943	Pump: 101mm L x 47mm W x 239mm H

ASPEN MINI AQUA - PLUS

Compact Condensate Pump



Item	Description
T0937	Pump: 183mm L x 28mm W x 28mm H Reservoir: 80mm L x 39mm W x 34mm H

ASPEN MINI BLANC

Compact Condensate Pump



Item	Description
T0938	Pump: 182mm L x 55mm W x 115mm H

ASPEN HI-LIFT PUMP

Hi-Lift Pumps - Peristaltic



Item	Description
T0911	244mm L x 148mm W x 132mm H Tank Capacity: 1.0 litre. Weight 1.75Kg
T0912	244mm L x 148mm W x 164mm H Tank Capacity: 2.0 litres. Weight 1.80Kg

ASPEN PUMP MAX HI-FLOW

Hi-Flow Pump



Item	Description
T0918	285mm L x 144mm W x 134mm H Tank Capacity: 1.7 litres. Weight: 1.65Kg

ASPEN MINI TANK

Universal Pump - Peristaltic



Item	Description
T0916	135mm L x 77mm W x 115mm H Weight 1.35Kg

ASPEN UNIVERSAL PUMP

Universal Pump - Peristaltic



Item	Description
T0916	135mm L x 77mm W x 115mm H Weight 1.35Kg

REFRIGERANT

R32 - 3kg



Item	Description
R32-3KG	R32-Refrigerant 3kg

PVC DRAIN TUBE



Item	Description
T0920	Drain tube (clear) 6.0mm (1/4") I.D x 30 mtr roll.
T0921	Drain tube reinforced 10.0mm (3/8") I.D x 30 mtr roll.

PAIR COIL

Standard Pair Coil



Item	Description
AAP1412	1/4X1/2 Pair Coil Copper Tube
AAP1438	1/4X3/8 Pair Coil Copper Tube
AAP1458	1/4X5/8 Pair Coil Copper Tube
AAP3834	3/8X3/4 Pair Coil Copper Tube
AAP3858	3/8X5/8 Pair Coil Copper Tube

DRAIN HOSE

Double Layer



Item	Description
ADH0014	Drain Hose 14mm Double Layer
ADH0016	Drain Hose 16mm Double Layer

CLEANING COVER

Hi-Wall



Item	Description
ACC0001	Air Conditioning Cleaning Cover - Hi Wall

CLEANING COVER

Cassette



Item	Description
ACC0002	Air Conditioning Cleaning Cover - Cassette

PLASTIC CAPPING

90° Flat Elbow



Item	Dimension (mm)
AAD0804	80 - 120 x 120
AAD0104	100 - 140 x 140

PLASTIC CAPPING
Joiner


Item	Dimension (mm)
AAD0807	80 x 50
AAD0107	100 x 65

PLASTIC CAPPING
90° Wall Bend (off the wall)


Item	Dimension (mm)
AAD0806	80 - 100 x 100
AAD0106	100 - 110 x 110

PLASTIC CAPPING
Wall Duct (2m length)


Item	Dimension (mm)
AAD0802	80 x 2M
AAD0102	100 x 2M

PLASTIC CAPPING
End Cap (1pc)


Item	Dimension (mm)
AAD0808	80 - 100 x 205
AAD0109	100 - 127 x 225

PLASTIC CAPPING

Eave Cap



Item	Dimension (mm)
AAD0803	100 - 70 x 138
AAD0103	80 - 70 x 130

PLASTIC CAPPING

T-Joint



Item	Dimension (mm)
AAD0108	100 - 200 x 150

PLASTIC CAPPING

Flexible Joiner



Item	Dimension (mm)
AAD0805	80 x 85cm (total length 102cm)
AAD0105	100mm x 62cm (total length 77cm)

VIBRATION PAD

Rubber



Item	Dimension (mm)
CVP1001	Vibration Pad 1000 x100x10
CVP3030	Vibration Pad 300x300x10mm

CONDENSER FEET

2 PC Set



Item	Dimension (mm)
AAD1101	450x95mm
AAD1102	1M PVC

SLAB

Slab HDPE UV 180 kg



Item	Dimension (mm)
AAD1301	845x418x48mm

DRAIN PIPE

PVC Drain Pipe



Item	Dimension (mm)
ADP1001	15mm x 3.9M
ADP1003	20mm x 3.9M
ADP1005	25mm x 3.9M
ADP1007	32mm x 3.9M

DRAIN FITTING

PVC 90 Deg Equal Elbow



Item	Dimension (mm)
ADF1010	15mm
ADF1012	20mm
ADF1014	25mm
ADF1015	32mm

DRAIN FITTING
PVC 45 Deg Elbow


Item	Dimension (mm)
ADF1018	15mm
ADF1020	20mm
ADF1022	25mm
ADF1024	32mm

DRAIN FITTING
PVC Equal Tee


Item	Dimension (mm)
ADF1028	15mm
ADF1030	20mm
ADF1032	25mm
ADF1034	32mm

DRAIN FITTING
PVC Socket Coupler


Item	Dimension (mm)
ADF1036	15mm
ADF1038	20mm
ADF1040	25mm
ADF1042	32mm

DRAIN FITTING
PVC Reducing Socket


Item	Dimension (mm)
ADF1044	20 x 15mm
ADF1046	25 x 15mm
ADF1048	25 x 20mm
ADF1049	32 x 25mm

DRAIN FITTING
PVC Reducing Bush


Item	Dimension (mm)
ADF1052	20 x 15mm
ADF1054	25 x 15mm
ADF1056	25 x 20mm

DRAIN FITTING
PVC PT Male Socket


Item	Dimension (mm)
ADF1060	15mm
ADF1062	20mm
ADF1064	25mm

DRAIN FITTING
PVC PT Female Socket


Item	Dimension (mm)
ADF1070	15mm
ADF1072	20mm
ADF1074	25mm

DRAIN FITTING
PVC Barrel Union


Item	Dimension (mm)
ADF1077	32mm
ADF1110	15mm
ADF1112	20mm
ADF1114	25mm

FREDDOX CONDENSATE PIPE

Weather Proof Pipe



Item	Dimension (mm)
ADH1014	14mm x 50M

FREDDOX ROOF BRACKET

AC Roof Bracket



Item	Dimension
ARB0150	150 kg

FREDDOX WALL BRACKET

Small AC Wall Bracket



Item	Dimension (mm)
AWB0450	450mm x 120kg

FREDDOX WALL BRACKET

Large AC Wall Bracket



Item	Dimension (mm)
AWB0550	550mm x 150kg

FREDDOX BRACKET

Small AC Bracket, Adjustable Bar



Item	Dimension
AWB9120	120kg

FREDDOX BRACKET

Large AC Bracket, Adjustable Bar



Item	Dimension
AWB0450	150kg

airloc® smartfit

A modern take on plastic fittings – use and install what you need.

Most models don't require cutting down - no waste, better for the environment, time saver.

Make last minute changes on the job...

Depending on your job needs **airloc® smartfit** fittings can be supplied with adaptors fitted - with some fittings allowing up to 10 size combinations from the one part number.

Tailor fittings on the go by reassigning or removing adaptors or by applying cuts to combos. **airloc® smartfit** makes installations in tight spaces easier!

All **airloc® smartfit** fittings are easy to unassemble to allow for ease of access through man holes or tight spaces and can be re-assembled in the roof cavity.

Ever-made a wrong cut on a Combo...

With **airloc® smartfit** combos if you make a wrong cut you can correct it by fitting a suitably sized airloc adaptor and you'll be back to where you started – what Combo fitting on the market lets you do that?

Carry spare product and adaptors with you..

To save time on mind changes or delivery errors why not keep some **airloc® smartfit** key fittings and adaptors on hand it's gotta save time.



BRANCH TAKE OFF



Fully Assembled

Item	Description
AAD3101	Insulated BTO 200/150/150
AAD3103	Insulated BTO 200-200-200/150
AAD3105	Insulated BTO 250-250-200/150
AAD3107	Insulated BTO 250-200-200
AAD3109	Insulated BTO 300-300/250-250
AAD3111	Insulated BTO 300-200-200
AAD3113	Insulated BTO 350-350/300-300
AAD3115	Insulated BTO 400-400/350-300

Spare Parts

Item	Description
AAD3001	200/150/150 Left
AAD3002	200/150/150 Right
AAD3003	200-200-200/150 Left
AAD3004	200-200-200/150 Right
AAD3005	250-250-200/150 Left
AAD3006	250-250-200/150 Right
AAD3007	250-200-200 Left
AAD3008	250-200-200 Right
AAD3009	300-300/250-250 Left
AAD3010	300-300/250-250 Right
AAD3011	300-200-200 Left
AAD3012	300-200-200 Right
AAD3013	350-350/300-300 Left
AAD3014	350-350/300-300 Right
AAD3015	400-400/350-300 Left
AAD3016	400-400/350-300 Right

Item	Description
AAD6001	Insulation For 200-150-150
AAD6002	Insulation For 200-200-200/150
AAD6003	Insulation For 250-200-200
AAD6004	Insulation For 250-250-200/150
AAD6005	Insulation For 300-200-200
AAD6006	Insulation For 300-300/250-250
AAD6007	Insulation For 350-350/300-300
AAD6008	Insulation For 400-400/350-300

DOUBLE BRANCH TAKE OFF



Fully Assembled

Item	Descriptions
AAD4101	Insulated DBTO 200-150-150-150
AAD4102	Insulated DBTO 250-200/150-150-150
AAD4103	Insulated DBTO 250-250/200-200-200
AAD4104	Insulated DBTO 300-300/200-200-200
AAD4105	Insulated DBTO 300-300-250-250-250
AAD4106	Insulated DBTO 350-250-250-250
AAD4107	Insulated DBTO 350-350/300-300-300
AAD4108	Insulated DBTO 400-400/350-300-300

Spare Parts

Item	Descriptions
AAD4001	200-150-150-150 HALF
AAD4002	250-200/150-150-150 HALF
AAD4003	250-250/200-200-200 HALF
AAD4004	300-300/200-200-200 HALF
AAD4005	300-300-250-250-250 HALF
AAD4006	350-250-250-250 HALF
AAD4007	350-350/300-300-300 HALF
AAD4008	400-400/350-300-300 HALF

Item	Descriptions
AAD7001	Insulation For 200-150-150-150
AAD7002	Insulation For 250-200/150-150-150
AAD7003	Insulation For 250-250/200-200-200
AAD7004	Insulation For 300-300/200-200-200
AAD7005	Insulation For 300-300/250-250-250
AAD7006	Insulation For 350-250-250-250
AAD7007	Insulation For 350-350/300-300-300
AAD7008	Insulation For 400-400/350-300-300

Y BRANCH



Fully Assembled

Item	Description
AAD5101	Insulated Y 200-150-150
AAD5102	Insulated Y 250-200-200
AAD5103	Insulated Y 300-250-250
AAD5104	Insulated Y 350-300-300
AAD5105	Insulated Y 400-350-350
AAD5106	Insulated Y 450-400-400

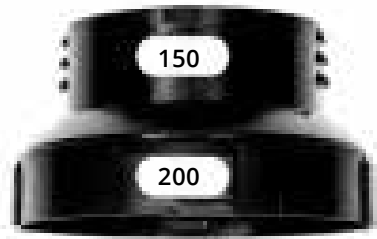
Spare Parts

Item	Description
AAD5001	200-150-150 Half
AAD5002	250-200-200 Half
AAD5003	300-250-250 Half
AAD5004	350-300-300 Half
AAD5005	400-350-350 Half
AAD5006	450-400-400 Half

Item	Description
AAD8001	Insulation For 200-150-150
AAD8002	Insulation For 250-200-200
AAD8003	Insulation For 300-250-250
AAD8004	Insulation For 350-300-300
AAD8005	Insulation For 400-350-350
AAD8006	Insulation For 450-400-400

ADAPTORS 1 STEP

Fits BTO, DBTO and Y Branches

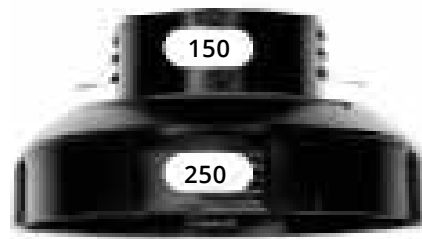


1 Step Adaptor

Item	Description
AAD1001	200 - 150
AAD1003	250 - 200
AAD1005	300 - 250
AAD1007	350 - 300
AAD1009	400 - 350
AAD1011	450 - 400

ADAPTORS 2 STEP

Fits BTO, DBTO and Y Branches



2 Step Adaptor

Item	Description
AAD1002	250 - 150
AAD1004	300 - 200
AAD1006	350 - 250
AAD1008	400 - 300
AAD1010	450 - 350

REDUCERS

For Flexible Ducts



Item	Description
AAD2001	200 - 150
AAD2002	250 - 200
AAD2003	300 - 250
AAD2004	350 - 300

REDUCERS

For Flexible Ducts



Item	Description
AAD2005	400 - 350
AAD2006	450 - 400



Smart air for smarter living

greeac.co.nz

0800 289 4733

Gree Weka

Hi-wall Inverter Heat Pumps



COLASMA
AIR PURIFICATION
TECHNOLOGY



AIR SUPPLY
DISTANCE UP
TO 12M



Air supply
distance up to 12m



5 steps for
air purification



Easy for installation
and cleaning



3D
air outlet



Safe
and reliable



7 fan
speeds



Wide
voltage range

HYVENT PVC



220X90mm

- Low Profile ducting enables it to be concealed when installed along the top of wall units. It can also be fitted in ceiling voids and cavity walls.
- The flat channel cross section of 19800mm² is equivalent to 150mm dia duct.
- Fully Complies to the New Zealand Building Code
- Product Group Number Classification : 1

The **HYVENT** Low Profile Duct System has been specifically designed to meet the needs of modern day applications. It has been developed to offer a solution to engineers who face limited access in ceiling voids and cavities, which is often the norm in modern day apartments, hotels and domestic dwellings.

The installation time for this range has been greatly reduced by using ideally matched fittings and ancillary products that you will find in the **HYVENT** range. This lightweight alternative to sheet metal is hygienic and due to the self-extinguishing PVC construction will not suffer from corrosion.

As with all **HYVENT** products, the Low Profile Duct System has been rigorously tested to meet NZBC requirements, ensuring both durability and performance. The specifier and contractor can be assured these products will deliver an effective solution for their system design.

- **Hygienic.**
- **Corrosion free.**
- **Lightweight.**
- **Low velocity.**
- **Self Extinguishing.**
- **Ease of installation.**
- **Can be cut down on site using non-specialist equipment.**
- **Low air leakage.**
- **Thoroughly tested by Australian experts.**
- **Multiple sizes.**
- **Wide range of fittings, making it very versatile.**
- **Wide range of additional ancillaries.**

HYVENT PVC DUCT

220x90mm Duct

- Low Profile ducting enables it to be concealed when installed along the top of wall units. It can also be fitted in ceiling voids and cavity walls.
- The flat channel cross section of 19800mm² is equivalent to 150mm dia duct.



Item	Description	Unit
DLP2290	HYVENT PVC Duct 220X90mm 2m	Each

HYVENT STRAIGHT ADAPTOR

150dia to 220X90

- Suitable for applications requiring high performance extraction or supply.
- All HYVENT PVC Duct and channels are made from flame-retardant material.



Item	Description	Unit
FAP2290	HYVENT PVC Straight Adaptor 150dia to 220X90	Each

HYVENT ELBOW ADAPTOR

150dia to 220X90

- Suitable for applications requiring high performance extraction or supply
- All HYVENT PVC Duct and channels are made from flame-retardant material

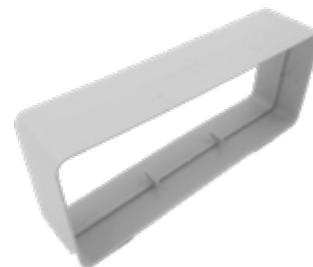


Item	Description	Unit
FBE2290	HYVENT PVC Elbow Bend Adaptor 150dia to 220X90	Each

HYVENT PVC JOINER

220x90mm - Joiner

- Suitable for applications requiring high performance extraction or supply
- All HYVENT PVC Duct and channels are made from flame-retardant material

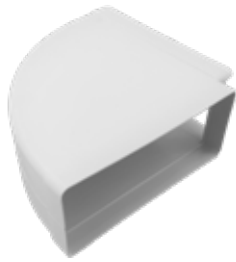


Item	Description	Unit
FJP2290	HYVENT PVC Joiner 220X90	Each

HYVENT HORIZONTAL BEND

Horizontal 90deg Bend

- Suitable for applications requiring high performance extraction or supply.
- All HYVENT PVC Duct and channels are made from flame-retardant material.

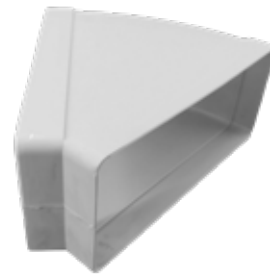


Item	Description	Unit
FBP9000	HYVENT PVC Horizontal 90deg Bend 220X90	Each

HYVENT HORIZONTAL BEND

Horizontal 45deg Bend

- Suitable for applications requiring high performance extraction or supply.
- All HYVENT PVC Duct and channels are made from flame-retardant material.



Item	Description	Unit
FBP4500	HYVENT PVC Horizontal 45deg Bend 220X90	Each

HYVENT VERTICAL BEND

Vertical 90deg Bend

- Suitable for applications requiring high performance extraction or supply.
- All HYVENT PVC Duct and channels are made from flame-retardant material.

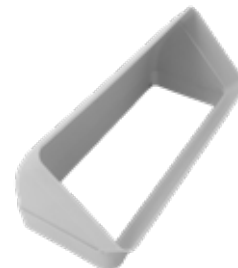


Item	Description	Unit
FBP9001	HYVENT PVC Vertical 90deg Bend 220X90	Each

HYVENT VERTICAL BEND

Vertical 45deg Bend

- Suitable for applications requiring high performance extraction or supply.
- All HYVENT PVC Duct and channels are made from flame-retardant material.



Item	Description	Unit
FBP4501	HYVENT PVC Vertical 45deg Bend 220X90	Each

HYVENT T-JOINER

T-Joiner

- Suitable for applications requiring high performance extraction or supply.
- All HYVENT PVC Duct and channels are made from flame-retardant material.



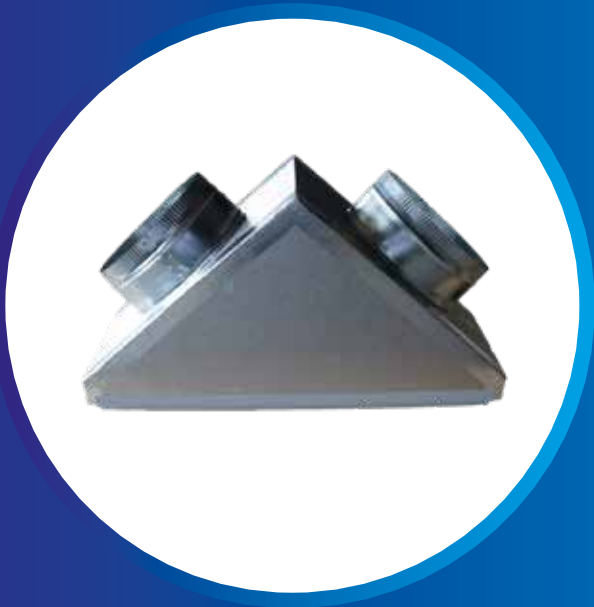
Item	Description	Unit
FPT2290	HYVENT PVC Duct T-Joiner 220X90	Each

HVAC Depot Manufactured Ducting and Fittings

HVAC Depot manufactures ducting and fittings from PF panel duct to order, also available to purchase by 4m X 1.2m sheets.

PF lightweight insulated duct panel was developed for HVAC air distribution, specifically in response to economical, technical, and construction challenges.

- Easy and simple installation, no lag insulation required, saving time and cost.
- Lightweight, decreasing the total weight of building.
- Flange joint connection minimises air leakage.
- Low thermal conductivity making it energy efficient with no condensation.
- Closed cell foam, good acoustic insulation.
- Fire proof, no smoke when exposed to fire.
- Faced with aluminium foil, it is water proof and anti-microbial.
- CFC and HCFC free, environment friendly.



Parameters:

Temperature range applicable: -250 to +150

Thermal conductivity: 0.02w/m.k (R1)

Fire tested to ISO9705

Combustibility Property: Class 0 (BS476 Part 6 & 7)

Water Absorption: 1.9 %

Dimension Change: 0.3%

Products details:

Foam Density: 50-60kg/m³

Aluminium foil (thickness: 0.06mm/0.08mm)
both sides.

Size: 3.95*1.2*0.02m

U SECTION BAR 4M

PVC

4 meter per length



Item	Description
FPU0004	20mm

TEE CONNECTOR JOINT 4M

PVC

4 meter per length



Item	Description
FPT0004	20mm

H BAYONET 4M

PVC

4 meter per length



Item	Description
FPH0004	20mm

INVISIBLE FLANGE JOINT

PVC

4 meter per length



Item	Description
FPT0004	20mm

COVERING ANGLE

PVC



Item	Description
FPC0001	20mm

H SECTION BAR 4M

Aluminium

4 meter per length



Item	Description
FAH1004	20mm

F SECTION BAR 4 M

Aluminium

4 meter per length



Item	Description
FAF0004	20mm

INVISIBLE FLANGE JOINT

Aluminium

4 meter per length



Item	Description
FAH0004	20mm

REINFORCEMENT SECTION BAR

PVC



Item	Description
FAS0004	4 meter per length

ANGLE BRACKET FOR PVC FLANGE

Zinc Coated



Item	Description
FGC0001	20mm

SHAPED DISK

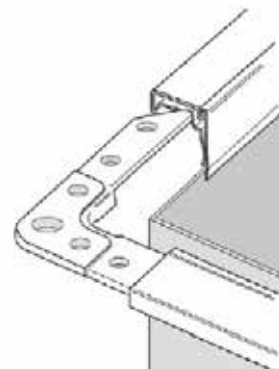
Zinc Coated



Item	Description
FSD0001	Two disk with one screw

FLANGE CORNER

275g



Item	Description
FCR2090	20mm 90deg
FCR3090	30mm 90deg

LIGHT WEIGHT INSULATED PANEL

PIR Foam

Aluminium foil



Item	Description
PIR4012	3950x1200x20mm

LOW PROFILE CLIP-IN SPIGOT

For Duct Board & Plenum



Item	Description
ASLP0200	200mm dia
ASLP0250	250mm dia
ASLP0300	300mm dia
ASLP0350	350mm dia
ASLP0400	400mm dia
ASLP0500	500mm dia

HEAT PUMPS



HEATING AND COOLING SOLUTIONS

SPLIT SYSTEMS

PLENUMS

G/S with 25mm Duct Liner

Custom sizes available, get in touch with us to find out more



Item	Description
PSA0500	Supply 2 spigot
PRA0500	Return 1 spigot
PSA0700	Supply 3 spigot
PRA0700	Return 2 spigot
PSA1000	Supply 4 spigot
PRA1000	Return 3 spigot

PLENUMS

PF Light Board

Other sizes are also available



Item	Description
PSF0500	Supply 2 spigot
PRF0500	Return 1 spigot
PSF0700	Supply 3 spigot
PRF0700	Return 2 spigot
PSF1000	Supply 4 spigot
PRF1000	Return 3 spigot

SILENCER

HYVENT Circular

Other sizes are also available



Item	Description
HSC1560	150dia x 600L
HSC2060	200dia x 600L
HSC2560	250dia x 600L
HSC3160	315dia x 600L
HSC3540	350dia x 400L
HSC4060	400dia x 600L
HSC4080	400dia x 800L
HSC5560	550dia x 600L

SILENCER

HYVENT Rectangular Splitting Type

30mm flange

Other sizes are also available



Item	Description
ASR4040	400x400-600mm(L)
ASR4545	450x450-900mm(L)
ASR6060	600x600-600mm(L)

GRILLE BOX
G/S Plain

Side entry



Item	Description
BGG0150	150x150
BGG0200	200x200
BGG0250	250x250
BGG0300	300x300
BGG0350	350x350
BGG0400	400x400
BGG0450	450x450
BGG0500	500x500
BGG0550	550x550
BGG0600	600x600

GRILLE BOX
G/S 25mm Insulation

Side entry



Item	Description
BGG0151	150x150
BGG0201	200x200
BGG0251	250x250
BGG0301	300x300
BGG0351	350x350
BGG0401	400x400
BGG0451	450x450
BGG0501	500x500
BGG0551	550x550
BGG0601	600x600

GRILLE BOX
PF Lightweight Board

Side entry



Item	Description
BGL0150	150x150
BGL0200	200x200
BGL0250	250x250
BGL0300	300x300
BGL0350	350x350
BGL0400	400x400
BGL0450	450x450
BGL0500	500x500
BGL0550	550x550
BGL0600	600x600

GRILLE BOX
G/S Plain

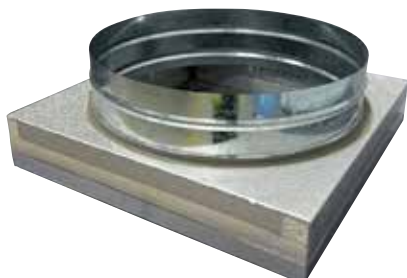
Top entry



Item	Description
BGG1515	150x150
BGG2020	200x200
BGG2525	250x250
BGG3030	300x300
BGG3535	350x350
BGG4040	400x400
BGG4545	450x450
BGG5050	500x500
BGG5555	550x550
BGG6060	600x600

GRILLE BOX
PF Lightweight Board

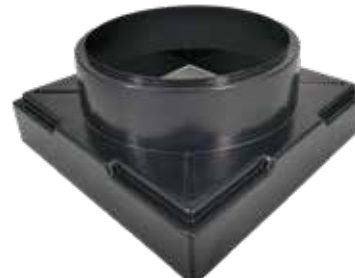
Top entry



Item	Description
BGL1515	150x150
BGL2020	200x200
BGL2525	250x250
BGL3030	300x300
BGL3535	350x350
BGL4040	400x400
BGL4545	450x450
BGL5050	500x500
BGL5555	550x550
BGL6060	600x600

GRILLE BOX
Plastic

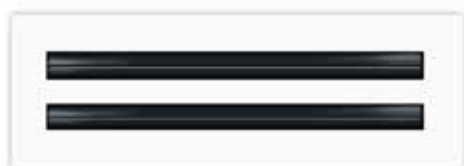
Top entry



Item	Description
BGP1515	150x150
BGP2015	200x200
BGP2525	250x250
BGP3020	300x300
BGP3525	350x350
BGP4035	400x400
BGP4540	450x450
BGP5050	500x500
BGP5535	550x550
BGP5540	600x600

SLOT DIFFUSER FIXED CORE
HYVENT Linear Slot Diffuser

With fixed core



Item	Description
LSD3011	Linear Double Slot Diffuser 300x88mm
LSD9944	Linear Single Slot Diffuser 990x44.5mm
LSD9988	Linear Double Slot Diffuser 990x88mm

SLOT DIFFUSER REMOVABLE CORE
HYVENT Linear Slot Diffuser

With removable core



Item	Description
LSD3516	Linear Triple Slot Diffuser 350x150

DEFLECTION GRILLE

HYVENT Double Deflection Grille

Powder coated white with OBD



Item	Description
ADG2030	200Hx300L
ADG2040	200Hx400L

LINEAR BAR GRILLE

HYVENT Bar Grille

Powder coated white with removable core



Item	Description
ABG4513	450x130
ABG0514	500x145
ABG7012	700x120
ABG1001	1000x100

DOOR GRILLE

HYVENT Door Grille



Item	Description
AGD5030	500X300
AGD5328	530x275

METAL FLOOR GRILLE

HYVENT Aluminium Floor Grille

Aluminium floor grille



Item	Description
AFG3010	300X100 Neck / Floor Grille - Brown
AFG3516	350X150 Neck / Floor Grille - Brown

PLASTIC FLOOR REGISTER

HYVENT Plastic ABS Floor Register

Beige / cream / slate with damper control



Item	Description
AFR3011	300X100mm Neck / Floor Register - Beige
AFR3012	300X100mm Neck / Floor Register - Cream
AFR3013	300X100mm Neck / Floor Register - Slate

LOUVRE FACE GRILLE

HYVENT 4 Way Grille

Powder coated white



Item	Description
AGS3015	300SQ/150
AGS3722	375SQ/225
AGS4530	450SQ/300
AGS5237	525SQ/375
AGS5945	595SQ/450

LOUVRE FACE GRILLE

HYVENT 4 Way Louvre Plaque

Powder coated white



Item	Description
AGP6022	600/225SQ
AGP6030	600/300SQ
AGP6037	600/375SQ

LOUVRE FACE GRILLE

HYVENT 2-Way Louvre Face Grille

Powder coated white



Item	Description
AGS2252	225SQ 2-way
AGS4502	450SQ 2-way

LOUVRE FACE GRILLE

HYVENT 3-Way Louvre Face Grille

Powder coated white



Item	Description
AGS1503	150SQ 3-way
AGS2253	225SQ 3-way

SWIRL GRILLE

HYVENT Swirl Grille

Powder coated white



Item	Description
AGS6060	595X595 34 Blades

ROUND DIFFUSER

HYVENT Round Diffuser

Adjustable centre cone allows control of air flow



Item	Description
ARD0100	100mm
ARD0150	150mm
ARD0200	200mm
ARD0250	250mm
ARD0300	300mm

DOWN JET DIFFUSER

HYVENT Round Down jet Diffuser



Item	Description
ARJ0150	150mm
ARJ0200	200mm
ARJ0250	250mm

ECO ROUND DIFFUSER

ECO Round Diffuser

Plastic clips on the neck for easy installation



Item	Description
ARD0151	150mm
ARD0125	125mm
ARD0201	200mm

ROUND EGG CRATE

HYVENT Egg crate Extract Grille



Item	Description
AEG0151	150mm
AEG0201	200mm
AEG0251	250mm

MULTI DIRECTIONAL OUTLET

Adjustable Ceiling Diffuser



Item	Description
MDO1532	150 X 300 2 -module
MDO2424	240 X 240 4 -module
MDO3034	300 X 300 4 -module
MDO3634	360 X 360 4 -module
MDO4044	400 X 400 4 -module

FIXED LOUVRE GRILLE

HYVENT Fixed Louvre Grille

Fitted with insect screen



Item	Description
AFG0150	150dia
AFG0200	200dia

EGG CRATE GRILLE

HYVENT Egg Crate Grille

Powder coated white with fixed core



Item	Description
AGE1515	150SQ Neck
AGE2520	200SQ Neck
AGE3025	250SQ Neck
AGE3530	300SQ Neck
AGE3935	350SQ Neck
AGE5955	550SQ Neck

EGG CRATE GRILLE

HYVENT Hinge Filter Grille

Powder coated white (with filter)



Item	Description
AGR1515	150SQ Neck
AGR2020	200SQ Neck
AGR2525	250SQ Neck
AGR3535	350SQ Neck
AGR4040	400SQ Neck
AGR5045	500X450 Neck
AGR5555	550SQ Neck
AGR7035	700X350 Neck
AGR7060	700X600 Neck
AGR8040	800X400 Neck
AGR9045	900X450 Neck

EGG CRATE GRILLE

HYVENT Egg crate Extract Grille

Fitted with insect mesh screen



Item	Description
AEG0100	100mm
AEG0150	150mm
AEG0200	200mm

WEATHER PROOF LOUVRE GRILLE

Aluminium Louvre with Mesh Screen



Item	Description
AWL4040	400x400
AWL6040	600X400
AWL6060	600x600
AWL9030	900X300

WEATHER PROOF COWL

SS Mesh No Flap - Square



Item	Description
AWC0150	150mm
AWC0200	200mm
AWC0250	250mm

ROOF COWL

Aluminium Roof Cowl



Item	Description
ARC0150	150mm dia
ARC0200	200mm dia
ARC0250	250mm dia
ARC0300	300mm dia
ARC0350	350mm dia

WEATHER PROOF COWL

SS Mesh No Flap - Round



Item	Description
AWC0151	150mm
AWC0201	200mm

ROOF F LASHING

EPDM

HYVENT roof flashing with square base



Item	Description
ARF0004	95-197 dia
ARF0008	171-343 dia
ARF0009	245-450 dia

ROOF COWL KIT

Roof Cowl and Flashing Kit



Item	Description
KRC1500	150mm
KRC2000	200mm
KRC2500	250mm

ANTI DOWN DRAFT COWL

Galvanised with Bird Mesh



Item	Description
ADD0100	100dia
ADD0150	150dia
ADD0200	200mm
ADD0250	250mm

INLINE FILTER TUBE

G/S



Item	Description
IFU1500	150mm
IFU0200	200mm

SOCK FILTER BAG

G4

The bag is designed for inline filter tubes



Item	Description
SOK0150	150mm
SOK0200	200mm

INLINE FILTER UNIT

G/S



Item	Description
BFU0125	125mm
BFU0150	150mm
BFU0200	200mm
BFU0250	250mm
BFU0315	315mm
BFU0400	400mm

PANEL FILTER

G2

Custom sizes available



Item	Description
APC0245	245SQ
APC0315	315SQ
APC0380	380SQ
APC0450	450SQ
APC0540	540SQ
APC0630	630SQ
APC0750	750SQ

PLEATED FILTER

G4

Custom sizes available.



Item	Description
FTP0047	47mm

FILTER CARTRIDGE

F8



Item	Description
BFC0800	298X298X97

SILENT FAN

Silent Mixed Flow Arctic EC Fan

- Low noise for apartments, offices, hotel rooms applications
- Speed controllable
- Sealed for life ball bearings



Item	Description
FAN0150	150dia
FAN0200	200dia

INLINE FAN

HYVENT Inline Mixed Flow EC Fan

- Speed controllable
- Sealed for life ball bearings



Item	Description
FAN1503	150dia
FAN0203	200dia
FAN0253	250dia
FAN3153	315dia

CEILING FAN

Axial Exhaust Fan



Item	Description
FAN0158	150mm

INLINE FAN

HYVENT Inline Axial Fan



Item	Description
FAN0154	150mm

CENTRIFUGAL FAN

HYVENT 200mm Centrifugal Fan



Item	Description
FAN1200	200dia

THERMOSTAT SWITCH

Thermostat Switch 0-40 Degrees



Item	Description
SWT0040	0-40 degree

DPS

Air Differential Pressure Switch

Air Differential Pressure Switch with on/off output 20-300pa



Item	Description
ASW0001	20-300pa

PRESSURE GAUGE

Range 0-60pa

It measures system pressure of fan, blower, filter



Item	Description
APG0060	0-60pa
APG0500	0-500pa

BACK DRAFT DAMPER

G/S

Spring loaded butterfly damper



Item	Description
FDB1001	100mm
FDB1501	150mm
FDB2001	200mm
FDB2501	250mm
FDB3001	300mm

MOTORISED DAMPER

HYVENT Motorised Damper



Item	Description
FDP1501	240V Motorised Damper 150
FDP1502	240V Motorised Damper 150
FDP2001	24V Motorised Damper 200
FDP2002	240V Motorised Damper 200
FDP2501	24V Motorised Damper 250
FDP2502	240V Motorised Damper 250
FDP3001	24V Motorised Damper 300
FDP3002	240V Motorised Damper 300
FDP3501	240V Motorised Damper 350

BACK DRAFT DAMPER

PVC



Item	Description
FDB1500	150mm
FDB2000	200mm

QUADRANT SET

Damper Quadrants

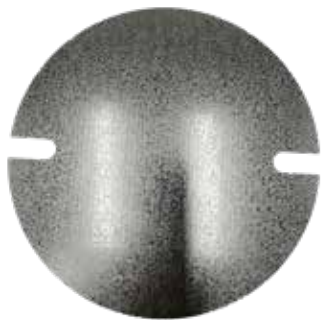


Item	Description
ADQ0001	ZQK5
ADQ0002	DR20

DAMPER BLADE

G/S

Blades only



Item	Description
FBL1000	100mm
FBL1500	150mm
FBL2000	200mm
FBL2500	250mm
FBL3000	300mm
FBL3500	350mm

REDUCER

PVC

G/S reducers are also available



Item	Description
FAP1510	150-100
FAP1512	150-125
FAP2015	200-150
FAP2520	250-200

OPPOSED BLADE DAMPER

HYVENT Opposed Blade Damper



Code	Description
OBD1515	150X150
OBD3030	300X300

ACCESS PANEL

Curved Door



Item	Description
FAC1500	180X80 150dia
FAC2000	180X80 200dia
FAC2500	250X150 250dia
FAC3000	250X150 300dia
FAC3550	250X150 355dia
FAC4000	250X150 400dia

ACCESS PANEL

Flat Door



Item	Description
FAF1500	300X150mm
FAF2000	300X2000mm
FAF3000	400X300mm
FAF4000	500X400mm
FAF5000	600X500mm

ACCESS DOOR

Bullock Access Door



Item	Description
ABD1221	240X150
ABD2033	380X240
ABD3346	500X370
ABD4661	650X500



**Made for you.
Made by us.**



EQUIPMENT

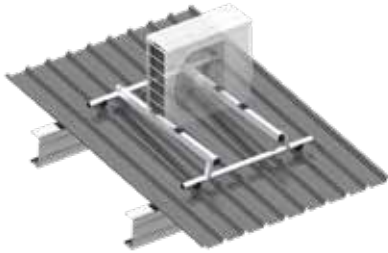
REFRIGERATION

HVAC

MONKEY TOE ROOF MOUNT

Monkey Toe Roof Mount Kit

Rated 120kg



Item	Description
MRK1200	1200mm purlins 300mm adjustable upright
MRK1800	1800mm purlins 600mm adjustable upright

MONKEY TOE HEAVY DUTY

Monkey Toe Heavy Duty Roof Kit

Rated 300kg

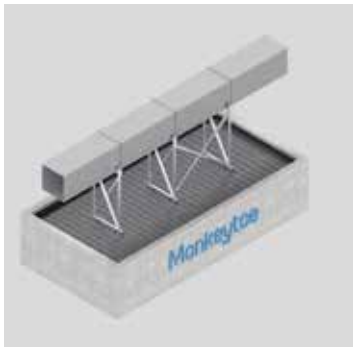


Item	Description
MRK1201	1200mm purlins, 300mm adjustable upright
MRK1801	1800mm purlins, 600mm adjustable upright
MRK2401	2400mm purlins, 600mm adjustable upright

MONKEY TOE DUCT

Duct Support

Rated 120kg



Item	Description
MRK001	Concrete ground mounted fixing kit
MRK0002	Timber ground mounted fixing kit
MRK3811	Vertical Support - PM38 1100mm long
MRK3858	Full Length 5800mm

MONKEY TOE MOUNT

Monkey Toe Condenser Mount

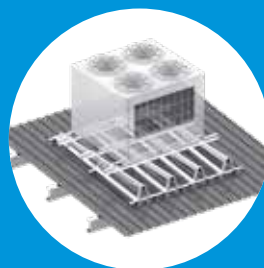
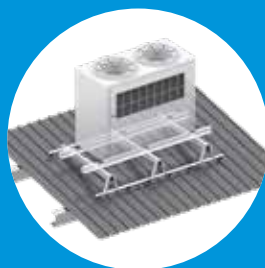
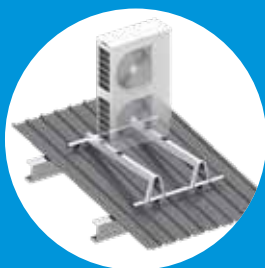
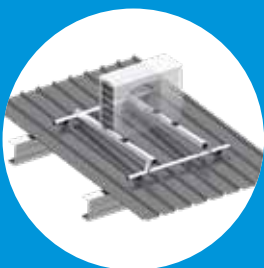
Adjustable unit stacker



Item	Description
MRK1002	1000mm high
MRK1502	1500mm high

Monkeytoe

WE STOCK MONKEYTOE CONDENSER MOUNTS



www.monkeytoe.co.nz

HYVENT BOXED FAN

Boxed Centrifugal Extract & Supply



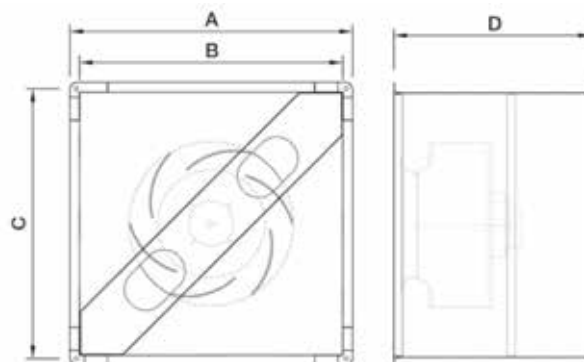
Non-standard sizes are also available

- Low sound aerofoil impeller
- High aerodynamic efficiency
- No tonal noise
- Galvanised steel housing
- Sealed for life ball bearings
- Speed controllable
- IP54 230V/50Hz/1Φ

Item	Description
HIC2521	0.2kW 2420rpm
HIC2841	0.11kW 1360rpm
HIC3141	0.14kW 1240rpm
HIC3541	0.27kW 1390rpm
HIC4041	0.43kW 1280rpm
HIC4541	0.62kW 1230rpm
HIC4561	0.3kW 920rpm
HIC5041	1.3kW 1340rpm

Code	Speed (rev/min)	230V/50Hz			Sound Pressure Level (dBA@3m)	Induct Sound Power Level (dB re 10-12 Watts)							
		Motor Input (kW)	Full Load Current (A)	Max Temp (°C)		63	125	250	500	1k	2k	4k	8k
HIC2521	2420	0.2	0.86	60	47	78	72	66	64	61	60	61	54
HIC2841	1360	0.11	0.53	60	39	70	63	55	56	52	51	55	46
HIC3141	1240	0.14	0.62	60	40	71	64	56	57	53	53	55	48
HIC3541	1390	0.27	1.3	60	42	74	72	62	59	56	51	53	51
HIC4041	1280	0.43	1.9	60	43	71	69	63	62	55	52	48	53
HIC4541	1230	0.62	2.8	60	47	76	72	71	64	57	53	49	51
HIC4561	920	0.3	1.4	60	40	74	67	59	57	51	53	46	35
HIC5041	1340	1.3	5.8	60	52	81	78	72	69	70	56	52	56

Code	Dimensions (mm)				Weight (kg)
	A	B	C	D	
HIC2521	470	400	435	400	16
HIC2841	470	400	435	400	18
HIC3141	470	400	435	400	19
HIC3541	570	500	535	500	25
HIC4041	670	600	635	500	29
HIC4541	670	600	635	500	32
HIC4561	670	600	635	500	32
HIC5041	770	700	735	550	42



HYVENT ROOF FAN

Roof Centrifugal Extract



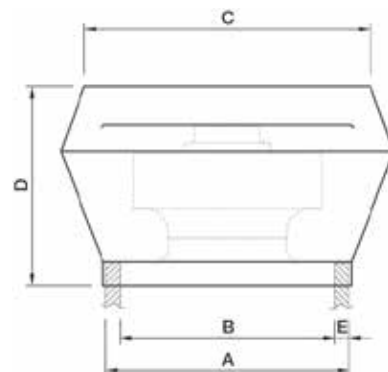
Non-standard sizes are also available

- Low sound aerofoil impeller
- High aerodynamic efficiency
- Low tonal noise
- Galvanised sheet steel cowling
- Speed controllable
- Sealed for life ball bearings
- IP54 230V/50Hz/1Φ

Item	Description
FRV3541	0.27kW 1390rpm
FRV4041	0.43kW 1280rpm
FRV4061	0.17kW 890rpm
FRV4541	0.62kW 1230rpm
FRV4561	0.3kW 920rpm
FRV5041	1.3kW 1340rpm
FRV5061	0.45kW 9210rpm
FRV5661	0.66kW 860rpm

Code	Speed (rev/ min)	230V/50Hz			Sound Pressure Level (dBA@3m)	Induct Sound Power Level (dB re 10-12 Watts)							
		Motor Input (W)	Full Load Current (A)	Max Temp (°C)		63	125	250	500	1k	2k	4k	8k
FRV3541	1390	0.27	1.3	60	42	66	62	57	54	50	46	38	38
FRV4041	1280	0.43	1.9	60	43	65	73	70	69	62	57	56	59
FRV4061	890	0.17	0.76	60	39	67	62	64	55	53	49	44	33
FRV4541	1230	0.62	2.8	60	47	68	77	74	73	65	62	58	56
FRV4561	920	0.3	1.4	60	41	61	70	66	65	57	54	49	46
FRV5041	1340	1.3	5.8	60	52	68	80	78	69	68	63	60	58
FRV5061	910	0.45	2.2	60	41	71	71	72	65	63	58	54	51
FRV5661	860	0.66	3	60	45	74	74	71	62	61	56	53	49

Code	Dimensions (mm)					Weight kg
	A	B	C	D	E	
FRV3541	550	450	600	454	50	24
FRV4041	550	450	600	454	50	32
FRV4541	650	550	720	561	50	46
FRV5041	650	550	720	561	50	52
FRV5061	650	550	720	561	50	48
FRV5661	750	650	950	609	50	50



Light Panel Ductwork and Plenum Boxes are getting better in cost, quality and manufacturing time.

- ✓ **Insulation:** Maximise energy efficiency with our high-quality insulated panels.
- ✓ **Custom Solutions:** Tailored designs to fit any HVAC project.
- ✓ **Easy Installation:** Quick and hassle-free installation process.
- ✓ **Request a quote today!** sales@hvacdepot.co.nz



TAPE
Reinforced Foil Aluminium

50m



Item	Description
CTR5050	50mm x 50M
CTR7550	75mm x 50M

TAPE
PVC

20m



Item	Description
ATP5020	50mm x 20M black
ATP5021	50mm x 20M white

TAPE
Rubber Foam

10m



Item	Description
ATF2510	5mmx 25mm 10M
ATF5010	5mmx 50mm 10M

CABLE TIE
Nylon


Item	Description
ACT4100	4X100mm PK100
ACT5250	4.8X250mm PK100
ACT8500	7.6X500mm PK100
ACT0912	9X1200mm PK100

DUCT SEALANT

375ml Cartridge

Paintable, fast drying, usable temperature -20 to 100 °C



Item	Description
CMS0300	375ml

CLEAR SILICONE

PVC

Interior/exterior, waterproof



Item	Description
CCS0300	300ml

SAFE SEAL

900ml

BOSTIK Safe seal sausage



Item	Description
CGS3590	900ml

WALL DOG SCREW

Zinc, QTY 100PCS

Pan square recess head self drilling screw



Item	Description
CSG3200	32mm

TAPPING SCREW

Stainless steel, SQ drive, shape C



Item	Description
WRT1700	A2-4,2X50

CONCRETE SCREW/THREADED ROD

Threaded Rod Hanger



Item	Description
CCS1038	M10X38
WRT9001	M10X40
CCS1064	M10X64

STUD SCREW

Wood Hanger



Item	Description
WRT1201	1/4X25-M10
WRT1202	1/4X50-M10

DRILLING SCREW

Hex Head



Item	Description
CSH1010	10-16X16
WRT4001	SS 10G_16X16
WRT4002	AG 10G_16X16
WRT4003	AG 12G_11X25

HEX SCREW HEAD

Stainless Steel



Item	Description
WRT8001	M6X16
WRT8002	M8X25
WRT8003	M8X45
WRT8004	M10X25
WRT1101	M10X50

HEXAGONAL BOLT

Zinc Plated



Item	Description
WRT8102	M8 x 25
CHB0008	M8 x 35
CHB0010	M10 x 35

THREADED ROD

Zinc Plated M10

3m



Item	Description
ATR3010	M10 3m Length

SPRING NUT

M10



Item	Description
CSN1001	Short spring
CSN1002	Long spring

HEX NUT

Zinc Plated



Item	Description
CHN0008	M8
CHN0010	M10

HEXAGON NUT

Stainless Steel



Item	Description
WRT6001	Hexagon nut M8
WRT6002	Hexagon nut M10

CONNECTION NUT

For Joining Threaded Rod



Item	Description
ATN0010	M10x30

LOCK WASHER

Stainless Steel



Item	Description
WRT7001	Lock washer D6
WRT7002	Lock washer D8
WRT7003	Lock washer D10

ROUND WASHER

Zinc Plated



Item	Description
CWF0008	M8 x 32
CWF0010	M10 x 32

SQUARE WASHER

M12



Item	Description
CWF0012	M12 30x30x3mm
CWF0124	M12 40x40x3mm

FLAT WASHER

Stainless Steel



Item	Description
WRT1301	M8
WRT1302	M10

FLAT WASHER

Stainless Steel, DIN 1440



Item	Description
WRT1400	D6, 1.6mm

SPEED CLAMP

Speed Clamp



Item	Description
ASC0215	Speed clamp 60-215mm dia
ASC0325	Speed clamp 60-325mm dia
ASC0525	Speed clamp 60-525mm dia

DUCT CLAMP

Duct Suspension Clamp

With rubber lining



Item	Description
ADC0100	100mm dia
ADC0150	150mm dia
ADC0200	200mm dia
ADC0250	250mm dia
ADC0300	300mm dia
ADC0350	350mm dia
ADC0400	400mm dia

BEAM CLAMP

M10



Item	Description
FMC0010	M10

MEZ G-CLAMP

3mm



Item	Description
ACG3505	Mez G-Clamp 3mm

L BRACKET

C/W Rubber Grommet



Item	Description
ABL0001	L Bracket

Z BRACKET

C/W Rubber Grommet



Item	Description
ABZ0001	E Bracket

U BRACKET

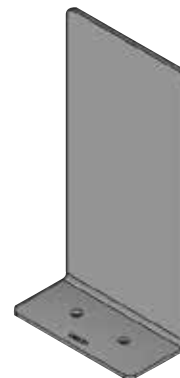
C/W Rubber Grommet



Item	Description
ABU0001	U Bracket

ISOLATOR BRACKET

3mm



Item	Description
MTI2005	Isolator bracket 200x50mm

BASE PLATE

M10 Base Plate Zinc Plated

For fixing threaded rod.



Item	Description
ABP0010	M10

TOGGLE LATCH

Stainless Steel



Item	Description
FLA0001	SS Toggle Latch 74.3X20.4mm

STRUT FITTINGS



Item	Description
ABP1541	1 Hole Channel Base Plate
ABP4887	2 Hole Angled Base Plate
ABP5047	90 deg Base plate 50mm/47mm
ABP4110	90 deg Base plate 41mm/104mm

UNI STRUT

Slotted Strut Channel

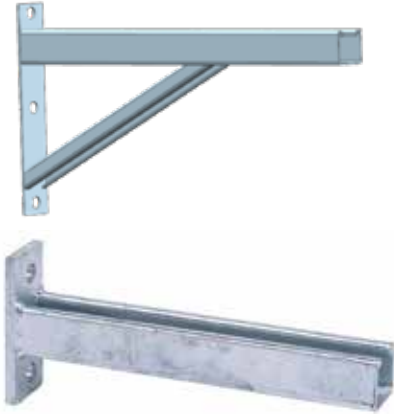
Standard length 3M, available in EG or HDG finish



Item	Description
SSC4121	41x21x2mm EG
SSC4122	41x21x2mm HDG
SSC4141	41x41x2mm EG
SSC4142	41x41x2mm HDG

CANTILEVER

HDG



Item	Description
AGC0450	Cantilever (HDG) 450mm
AGC0600	Cantilever (HDG) 600mm
AGC0601	Braced Cantilever 600mm
AGC0801	Braced cantilever 800mm

FOLDED ANGLE

G/S

Please contact us for special requirements



Item	Description
AFA2020	20X20X1.2M
AFA2525	25X25X1.2M
AFA3030	30X30X1.2M
AFA4040	40X40X1.2M

BLIND RIVETS

Dome Head



Item	Description
WRT1001	Inch 1/8-NO.42
WRT1002	Inch 1/8-NO.44
WRT1003	Inch 3/16-NO.63
WRT1004	Inch 1/8-NO.42

ZINC SPRAY

Complies with DIN 53151/ DIN 50021 tests



Item	Description
WRT1500	400ml

DOUBLE-ENDED DRILL BIT

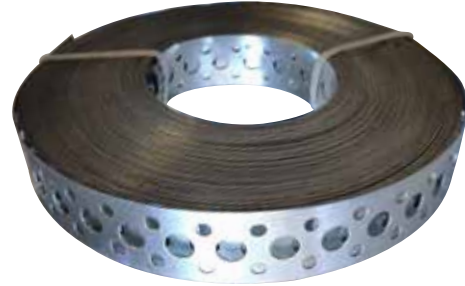
49mm Length



Item	Description
WRT1600	D3, 3MM

EASY STRAP

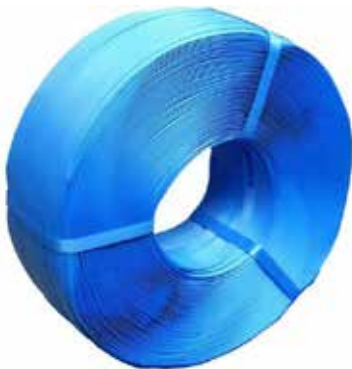
Galv Strap 25mmX0.6mmX25m



Item	Description
ASS0625	25mm X 0.6mm

PLASTIC STRAP

Polypropylene Strapping



Item	Description
ABS0001	12mm x 50M

PLASTIC HANGING PACK

Includes Strapping & Buckles



Item	Description
APP1000	12mm x 25M strap, 50 buckles

DUCT SADDLE SUPPORT



Item	Description
ADS0001	345mm x 148mm

SAFETY GEAR

Gloves



Item	Description
WRT2001	Cut protection gloves

SAFETY GEAR

Eye Protection AS/NZ1337



Item	Description
WRT5001	Full-vision safety goggles clear
WRT5002	Full-vision safety goggles tint

CUTTING DISC

Speed Cutting Disc



Item	Description
WRT3001	125 x 1.0 x 22mm

CONDENSER CAGE

Aluminium Outdoor Cage

Custom sizes and colours available, please enquire



Item	Description
AAC0002	1100H x 800W x 545D

CUSTOM MADE OUTDOOR CAGES

G/S Outdoor Cage

Custom sizes and colours available, please enquire



Item	Description
AAC0005	1020H x 935W x 580D

DUCT WRAP

ADW Quiet stuff



Item	Description
IFB2501	Autex Duct Wrap 25mm
IFB5001	Autex Duct Wrap 50mm

DUCT LINER

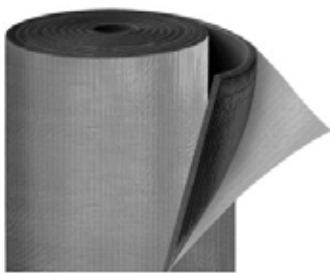
ISO 9705 Fire Test - Group IS Rating



Item	Description
IDL2500	1200 X 2400MM (25MM)
IDL5002	1200 X 2400MM (50MM)
IDL7500	1530 X 2400MM (75MM)

THERMOBREAK

Adhesive Back

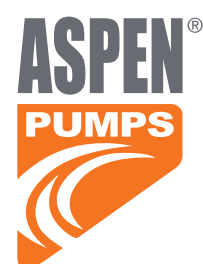


Item	Description
ITB0051	5mm Thermal break
ITB0010	10mm Thermal break
ITB0015	15mm Thermal break



**100%
Reclaimed
Insulation**

AFFILIATE BRANDS



CREDIT APPLICATION

Steps to completing the Credit Application Form:

1. All sections must be completed in full.
2. Your GST Registration number & Registered NZ Limited Company Number must be listed on this form.
3. We require credit references from Suppliers within the same industry, and must be from companies that are willing to supply them (Please note - Actrol, Heatcraft, Airefrig, Reece, BOC, UTI, - DO NOT PROVIDE References, please do not choose them as they cannot be used. We require a minimum of 3 with full contact details provided including email, phone numbers and account codes)
4. Must provide Consignment Address as well as mailing address, PO Box will not suffice on its own.
5. Please ensure Names & Addresses of all Directors and Partners are shown.
6. After reading and understanding our Terms & Conditions of sale, please ensure that Application is Signed and Dated.
7. The Guarantee must be signed by the trader & Witnessed (sole trader or company director where authorised to sign on behalf of the trader)
Please note:
8. Account payments can be made by Direct Debit to Westpac Account Number: 03-0162-0199948-00 (quoting your account code as reference number - which you will be supplied with upon approval) Or via Eftpos/credit card at any of our branches and head office.

Invoices & Statements

We are in the process of making our invoicing and statement method more efficient. In order to avoid the problem of lost invoices and statements we can send them automatically from our system to ensure you receive them before month end cut off date.

* Please provide the default email address for this option: (please print clearly)

*If you do not want this option, please be advised mailing does take longer; we will endeavor to get your invoices and statements to you as soon as possible.

Please return your completed form by fax/email to the following address:

Attention: Accounts Department

Email: ar@hvacdepot.co.nz

Phone: (09) 600 2286

Please allow 5 business days to process your application. You will be notified by email/phone.
Any queries please contact us using the details above.

INFORMATION TO BE TREATED AS STRICTLY CONFIDENTIAL

Please fill in all sections including full email address and phone numbers

1. Name of Company/Trading Entity: _____

2. GST Registration Number: _____

3. Registered NZ Limited Company Number: _____

4. Trading Name (If Different from above): _____

5. Previous Trading Name (if applicable): _____

6. Registered Office Address: (Please note must be actual address PO Box is not acceptable) _____

7. Delivery Address: (Please note must be actual address PO Box is not acceptable) _____

8. Postal Address: _____

9. Phone: _____

10. Mobile: _____

11. Fax: _____

12. Email (PLEASE PRINT) _____

13. Business Details:

Please Check:	Industry	Refrigeration	Air Conditioning	Htg & Vent	Other
Where applicable:	Type of Business	Service Work	Contractor	Manufacturer	End User
	Type of Equipment	Domestic	Commercial	Industrial	

14. Business is classed as: (Please Tick one of the below) Limited Company Sole Trader Trust

15. Date Company Registered: _____ Date Business Commenced: _____

16. Names & Addresses for: (Please Tick one of the below and fill in details) ☐ Directors Partners Sole Trader Trust

17. Credit References: MINIMUM OF 3

Please note - Actrol, Heatcraft, Airefrig, Reece, BOC, TOLL, TNT, UTI- DO NOT PROVIDE References, please do not choose them as they cannot be used. (We require a minimum of 3 with full contact details provided including **email, phone numbers** and **account codes**)

Name: _____

Account Reference: _____

Phone: (Please include area code) _____

Email: (Please Print) _____

Name: _____

Account Reference: _____

Phone: (Please include area code) _____

Email: (Please Print) _____

Name: _____

Account Reference: _____

Phone: (Please include area code) _____

Email: (Please Print) _____

18. Accounts Section - (MUST COMPLETE IN FULL)

Credit Limit Required: \$ _____

Accounts Payable Contact: _____

Phone: (Please include area code) _____

Email: (Please Print) _____

BRANCH MANAGER'S USE ONLY

Manager: _____

Date: _____

Comments: _____

HEAD OFFICE USE ONLY

H.O APPROVAL

DATE

ACCT. NO.

 CASH ONLY ☐ Yes ☐ No

Credit Limit: _____

Approval Signature: _____

THE APPLICANT UNDERTAKES, ACKNOWLEDGES AND AGREES THAT:

1. HVAC Depot is authorised to collect any information that it reasonably regards as necessary for its credit enquiries and control purposes from any reputable credit agencies, debt collection agencies and/or from any other person or corporate bodies it considers appropriate.
2. Any credit agencies and/or debt collection agencies and/or other persons are authorised to provide HVAC Depot with any information which may reasonably be regarded as necessary for the purposes of HVAC Depot credit enquiries.
3. The information provided in this application may be used for the purpose of assessing this application, and in the course of this assessment may be disclosed to a credit reporting agency.
4. HVAC Depot is hereby authorised to provide such information concerning the applicant to any other parties as the company may in its sole discretion determine.
5. The applicant hereby warrants that he/she has received, read and fully understands the nature and effect of the Terms & conditions of Sale and has authority to sign on behalf of and to bind the applicant with the information being true and correct.

(PRINT) NAME OF APPLICANT: _____

DESIGNATION: _____

SIGNATURE OF APPLICANT: _____

DATED: _____

GUARANTEE

1. In consideration of HVAC Depot agreeing to supply goods to the above applicant at my request, I unconditionally guarantee the due and punctual payment by the applicant of all monies payable by the applicant to HVAC Depot together with the performance of all obligations of the applicant under the terms of trade of HVAC Depot.
2. This guarantee shall be a continuing guarantee and shall not be discharged by any settlement or account.
3. My liability under this guarantee shall not be discharged, abnegated, prejudiced or affected by:
 - (a) the granting of time, credit or other indulgence or other concession by HVAC Depot;
 - (b) any alteration, modification, variation or addition to any agreement in respect of the supply of goods; or
 - (c) any other act, omission or event which, but for these provisions, might operate to discharge, impair or otherwise affect my obligations under this guarantee or any of the rights, powers or remedies conferred upon HVAC Depot by a guarantee or by law.

Signed By: _____

In The Presence Of: _____

Witness Signature: _____

Witness Name: _____

Address: _____

TERMS AND CONDITIONS OF SALE

1. General

Any order accepted by HVAC Depot ("the Company") whether or not it is based on any quotation or tender given by the Company is to be deemed to incorporate these terms and conditions. No variation or modification of, or substitution for, these terms and conditions (even if included in, or referred to in, the document placing the order) shall be binding on the Company, unless specifically accepted by the Company in writing.

2. Prices

Unless otherwise agreed in writing by the Company, the Company reserves the right to vary the price quoted for the goods in order to conform with the Company's prices for such goods ruling at the date of despatch, or to take account of any increase in wages, salaries, or cost of materials, between the date of the order and the date of delivery. This includes increases in prices of imported goods due to increased freight rates, taxes, import duty, or other government charges, and/or insurance rates including war risk, or of any variation in rates of exchange. Unless specifically agreed between us, all quoted prices are on a basis of delivery ex our specified warehouse.

3. Acceptance

Quotations are subject to acceptance within 30 days, after which they shall be deemed to have lapsed. The Company will do all in its power to see that deliveries are maintained according to schedule, but cannot accept responsibility for delays due to causes beyond its control.

4. Insurance

Insurance will not be affected by us on goods forwarded from our premises unless we have received written instructions to do so. Risk and the control of the goods shall pass to you the purchaser as soon as they have left our premises to the place nominated by you or to your premises or, if they are collected by you from our premises, then risk shall pass at the time of collection.

5. Storage

Should the Company not receive forwarding instructions sufficient to enable us to dispatch the goods on your behalf within a period of 7 days after the date of notification that they are ready for dispatch, you shall take delivery or arrange for storage of those goods. If you do not take delivery or arrange for storage the Company shall be entitled to arrange storage either at our works or elsewhere on your behalf and all charges for storage, insurance, demurrage, handling, etc., shall be payable by you.

6. Description

(a) Information regarding specifications, description, weights, measurements, powers, capacities, performance, and other data generally relating to the goods sold or supplied by the Company contained in advertisements, catalogue, price lists, illustrations, or other similar matter submitted to the customer by the Company whilst given in good faith, must be regarded only as approximate and intended to present to the customer a general guide. It is up to you to determine the nature, quality and condition of the goods sold or supplied by the Company and their sufficiency for any purpose and there should be no reliance by you upon any representation made by the Company, its servants or agents either orally or in writing (including any advertisement). No description of goods given by the Company will be deemed to constitute a sale by description.

(b) Notwithstanding that a sample of any goods has been exhibited to and inspected by a customer it is hereby declared that such sample was so exhibited and inspected solely to enable the buyer to judge for himself the quality of the bulk and not so as to constitute a sale by sample. The liability of the Company, if any, in respect of any misrepresentation shall not in any event exceed the cost of replacement of the goods in respect of which a claim is made.

(c) The Company will not in any event be liable for consequential loss, injury, or damage arising out of any misrepresentation or performance concerning the goods included in any order accepted by the Company.

7. Payment

Unless otherwise agreed in writing, payment for all goods purchased from the Company shall be made no later than the 20th day of the month following the month in which the goods are made available for delivery. All payments are to be made on due date as a condition precedent to future deliveries. In the event of payment in full not being received within 7 days of the due date, the Company reserves the right to charge interest at its current bank overdraft rate on any amount outstanding, calculated on a daily basis from the due date for payment to the actual date of payment and to charge the customer with any debt collection costs or legal expenses incurred in recovering overdue accounts where the debtor is in default with good cause. The Company reserves the right to take immediate action to recover any monies owing and to sue for the return of goods regardless of terms of payment where a customer commits an act of bankruptcy or goes into liquidation or receivership or enters into a creditors composition or has his credit standing impaired in any other way.

8. Patents and Designs

The Company shall not be liable in respect of any claim which may be made against the Company for infringement of any letters patent or registered design which may arise as a result of the Company carrying out instructions given by you, the customer. You agree to indemnify and keep indemnified the Company from and against all or any such claims and against all costs, damages, and expenses incurred by or recovered against the Company in respect of any such claims.

9. Delivery

Any delivery period referred to in a quotation is subject to confirmation by us on receipt of your order and will commence from the date on which we have both your order and full particulars. Any period or dates quoted for delivery are to be regarded as approximate only and the Company accepts no liability for any loss, injury, damage or expenses consequent upon any delay in delivery of goods. Delay due to circumstances outside the control of the company shall not entitle the customer to cancel any order or to refuse to accept delivery. Notwithstanding that the title of the goods may not have passed, the risk in the goods shall pass to you, the customer upon delivery. The Company reserves the right to deliver in installments, each installment to be separately invoiced for payment upon our stated terms and paid for accordingly notwithstanding late delivery or non-delivery of any other installment.

10. Force Majeure

Should the Company be delayed in or prevented from making delivery owing to any case whatsoever beyond the Company's control, the Company shall be at liberty to cancel or suspend the order without incurring any liability for any loss or damage resulting therefrom.

11. Damage or Loss in Transit

All forwarding is at the customer's risk. Freight insurance, if required, should be requested at the time of ordering. No claim for shortage in delivery will be entertained in cases where the Company has agreed to deliver the goods to the customer unless a separate notice in writing is given within 7 days of delivery. In the event of loss or damage to goods in transit, advice of such loss or damage must be submitted in writing to the carrier and to the Company within 14 days of the date of consignment as advised by the Company to the customer.

12. Jurisdiction and Forum

These terms and the contract of sale into which they are incorporated and governed by New Zealand law and the parties submit to the non-exclusive jurisdiction of the New Zealand courts. The United Nations Convention on Contracts for the International Sale of Goods does not apply to sales of goods which are the subject of these terms and conditions.

13. Ownership

- (a) The Company may recall the goods that were sold, if the payment is not received in full by the due date. The delivery or sale of the goods by the Company to you under these Conditions of Sale creates a fiduciary relationship between the Company and you in relation to those goods. Your right to possession of the goods shall cease if you breach or if you are not a company, commit an available act of bankruptcy or if being a company you do anything or fail to do anything which would entitle a receiver or debenture holder, or creditors composition to take possession of any assets or which would entitle any persons to present a petition for winding up.
- (b) All goods sold or delivered by the Company to the customer in which ownership is retained by the Company, must be stored separately so as to be readily identifiable.
- (c) If the goods are sold by the customer prior to payment having been made to the Company then the proceeds of sale shall be paid into a separate account for which separate records shall be kept. Such proceeds of sale shall be the property of the Company.
- (d) These terms and conditions shall apply notwithstanding that the goods may be amalgamated with or attached to other goods.
- (e) The Company and its agents shall at all times have the right to enter the customer's premises without notice to take possession of any goods in which ownership has been retained under these Conditions of Sale.
- (f) Any part of these conditions are severable and if any provision herein is held to be illegal or unenforceable for any reason, such illegality or unenforceability shall affect only that portion.

14. Personal Property Securities Act 1999 (the "PPSA")

You grant a security interest to the Company in each and every part of the Goods as security for payment of that part and of each other part or parts of the Goods and for any other amounts owing by the Customer to the Company from time to time, and for the performance by you of all the Customer's other obligations to the Company from time to time, ("Your indebtedness and obligations"). For the purposes of section 36(1)(b) of the PPSA, and to ensure maximum benefit and protection for the Company by virtue of section 36(1)(b)(iii) of the PPSA, you confirm and agree that you intend to and grant to the Company, as security for your indebtedness and obligations, a security interest in all of your present and after-acquired property except only for any such property which is or comprises items or kinds of personal property ("Excepted Property"):

- (a) in or to which you have rights; and
- (b) which has not been supplied by the Company to you, other than any Excepted Property which is or comprises proceeds of any of that present and after-acquired property which has been supplied by the Company to you. The Company may allocate amounts received from you in any manner it determines, including in any manner required to preserve any purchase money security interest it has in any Goods.

You waive the right to receive a copy of the verification statement confirming registration of a financing statement or financing change statement relating to the security interest under this Contract. You agree that nothing in sections 114(1)(a), 133 and 134 of the PPSA shall apply to this Contract, or the security under this Contract, and waives your rights under sections 121, 125, 129, 131 and 132 of the PPSA.

15. Return of Goods

The Company reserves the right to accept or reject the return of goods. Credit (if granted) will only be allowed on goods returned within 30 days of invoiced date and with both product and packaging in new and re-saleable condition. If an order has been executed correctly, and return of goods is accepted, a charge will be made to cover handling, restocking, documentation, etc. Goods which are not normal stock items are not returnable.

16. Warranty

Warranty on all equipment and parts is limited to that offered by the original manufacturer. In any event this is restricted to "repair or replacement" of the returned faulty part to our nearest warehouse (freight to customer's account) within a period of 12 months from date of original invoice. Warranty does not apply to:

- (a) Any defect which in the Company's opinion arose due to misuse, neglect, accident, vandalism, animal or insect damage, exposure to abnormally corrosive conditions; or to any Act of God i.e. flood, fire, lightning strike.
- (b) Any defect resulting from failure or inadequacy of the users electric power, water supply or drainage.
- (c) Any defect not immediately notified to the Company.
- (d) Any equipment which in the Company's opinion has been installed, operated, altered, dismantled, repaired or serviced by other than an authorised person or which has been fitted with any part not approved or sold by the Company.
- (e) Any equipment which in the Company's opinion shows evidence of the presence of refrigerant or oil other than that specified by the Company.
- (f) Light bulbs, glass components, belts, fuses, refrigerant, lubricants, or other consumables.
- (g) Any equipment where the purchaser has not in the Company's opinion carefully followed the specific operating instructions forwarded with the equipment concerning the proper use and care of the equipment, or uses the equipment for purposes other than those for which it is designed.
- (h) Replacement or cleaning of filter equipment.
- (i) Any equipment where the serial plate attached to same has been rendered illegible or removed. Any Warranty claims will only be considered when accompanied by fully completed Company Warranty Claim Forms and equipment and/or parts intact. In particular compressors are to be complete with all electrics, mounts and sealed off to prevent loss of lubricant. All other conditions and warranties, whether express or implied, and whether arising of common law or by statute, are hereby expressly excluded, and the Company shall not in any circumstances be liable to the customer or other party in respect of consequential loss, damage or injury howsoever arising.

17. Consumer Guarantees Act 1993 (the "CGA")

Where (were it not for this paragraph) the CGA would apply to the contract of sale into which these terms are incorporated, and you acquire (or hold yourself out to be acquiring) the goods for the purposes of a business as defined in the CGA, you agree that the CGA does not apply to the contract of sale. Nothing in these terms (particularly the clauses headed "Warranties" "Liability" and "No Credit for Returned Goods") is intended to have the effect of contracting out of the provisions of the CGA where the CGA applies. Where the CGA applies, these terms are modified accordingly. 18. Technical information Any technical specification or application information supplied by the Company, is without prejudice, and may not be used for the purposes of any liability claims against the Company.

18. Technical information

Any technical specification or application information supplied by the Company, is without prejudice, and may not be used for the purposes of any liability claims against the Company.

19. No Assignment

You must not transfer your rights in respect of the purchase of goods to any other party without the Company's prior consent in writing.



CONTACT US

5 Offenhauser Drive
East Tāmaki
Auckland 2013

Phone: +64 09 600 2286

Email: sales@hvacdepot.co.nz



www.hvacdepot.co.nz