

HYVENT Linear Slot Diffuser with Fixed Core

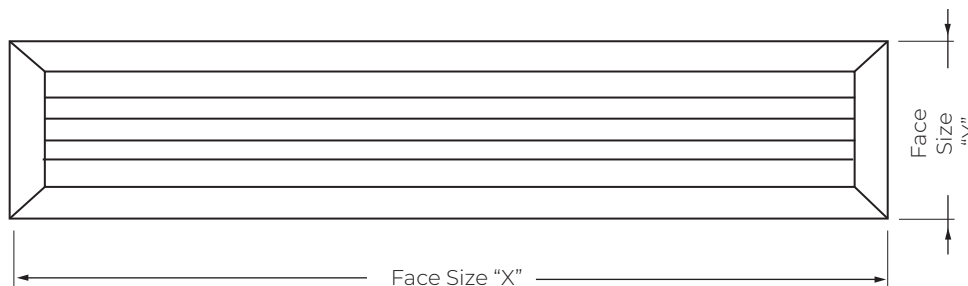
HYVENT Linear Slot Diffusers are designed to deliver excellent performance and aesthetic appeal in modern commercial environments. Constructed from high-quality aluminium extrusion and finished with a durable powder coating, these diffusers provide an adjustable air pattern and are suitable for both ceiling and wall installations.

Features

- Constructed from high-quality aluminium extrusion
- Powder coated white with black anodised blades as standard
- Each slot is fitted with adjustable deflection blades for 2-way air pattern control
- Suitable for ceiling or wall mounting applications
- Compatible with custom-made plenum boxes
- Air pattern adjustable, aesthetic appearance, and easy installation

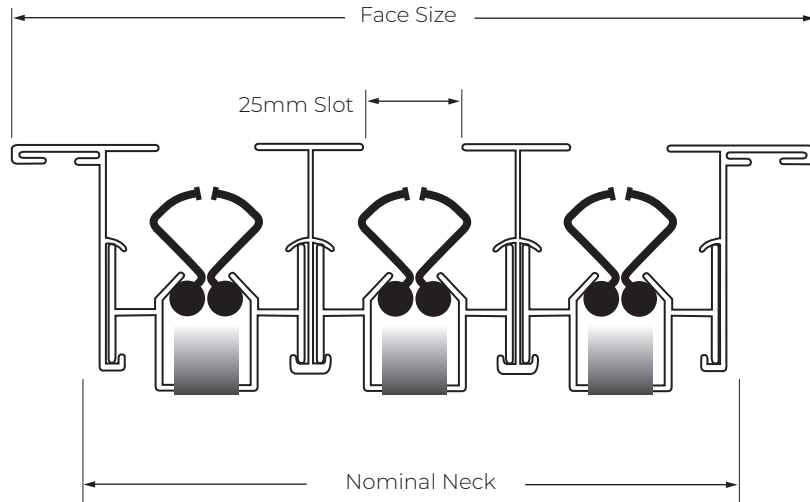
Application

Ideal for use in offices, commercial buildings, and retail spaces.



Technical Data

Item	Neck Size (mm)	Face Size (mm)	No. of Slots	Slot Width (mm)
LSD9944	990 × 44.5	1028 × 80	1	25
LSD3011	300 × 88	328 × 122	2	25
LSD9988	990 × 88	1032 × 142	2	25
LSD3516	350 × 131.5	378 × 168	3	25



Technical Data

Item	Air Volume (L/s)	Throw (m)	Pressure Drop (Pa)	Noise Level (NC)
LSD9944	20 – 80	1.0 – 3.5	15 – 30	20 – 30
LSD3011	25 – 100	1.5 – 4.0	18 – 32	22 – 33
LSD9988	30 – 120	1.8 – 4.5	20 – 35	25 – 35
LSD3516	35 – 140	2.0 – 5.0	22 – 38	25 – 37

Accessories

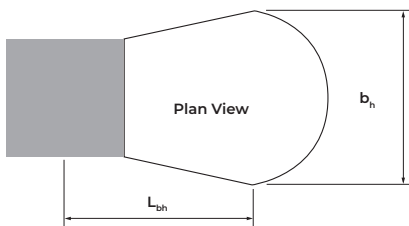
Custom plenum boxes available on request

Note:

L = Throw in M (refer graphs)

$L_{0.25}$ = Throw at 0.25m/s terminal velocity

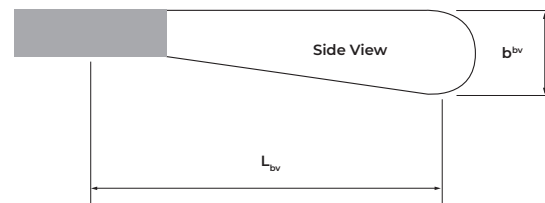
Active Length = supply air plenum length



Air Pattern (with isothermal air supply)

$$b_h = \text{Active Length} + (L_{0.25} \times 0.02)$$

$$L_{bh} = L_{0.25} \times 0.7$$



$$b_v = L_{0.25} \times 0.07$$

$$L_{bv} = L_{0.25} \times 0.6$$

Linear Slot Diffuser: LSD

Data presented is based on a 1000 mm long diffuser module installed in a 2.7 m high flush ceiling under isothermal conditions (ambient supply air at 20 °C ± 3 °C).

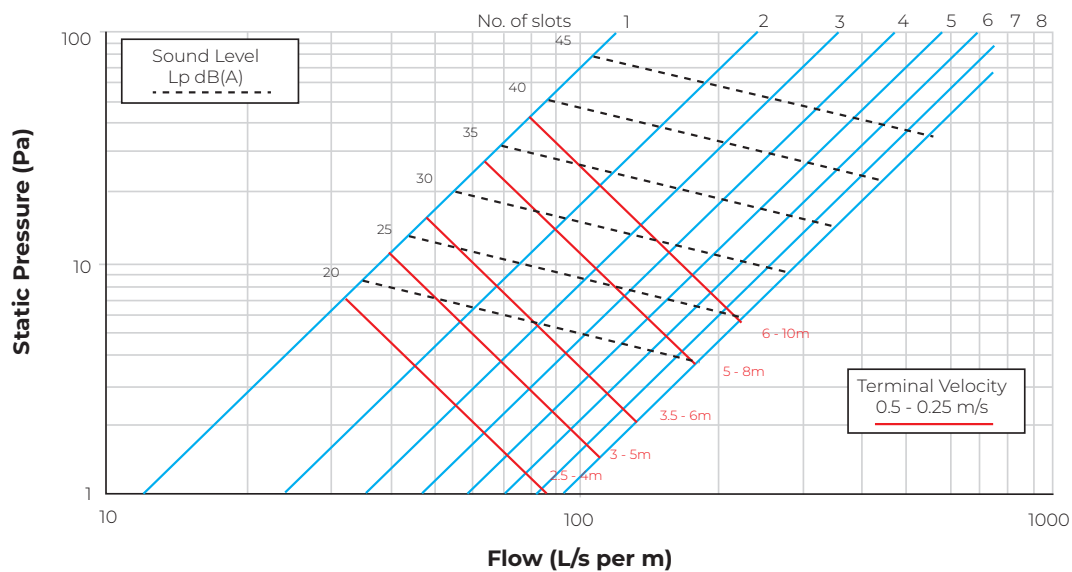
- Performance data corresponds to 1-way air discharge.
- Recommended supply air temperature differential for horizontal throw applications is within ±12 °C.
- Noise levels were derived by deducting 10 dB for room absorption from the measured sound power levels.

Linear Slot LSD25 Horizontal Throw

(The data presented has been extrapolated from a sample set of tested products)

Selection Guide for 25mm Linear Slot Diffuser - Horizontal Projection

Data based on 1000mm Long Active Length



These graphs are for selection only and should not be used for commissioning.
Example Selection: Example selection: A 1000mm long 2 slot 100l/s will have a static pressure of 18Pa, throw of 5.5-9m & sound pressure level of 32 dB(A)

Linear Slot LSD25

Horizontal Throw

(The data presented has been extrapolated from a sample set of tested products)

Selection Guide for 25mm Linear Slot Diffuser - Vertical Projection

Data based on 1000mm Long Active Length

